

PROJECT	DESIGNATION
1900308	1600060
CONTRACT	BRIDGE FILE
R-42287	062-82-10333

INDIANA DEPARTMENT OF TRANSPORTATION



STRUCTURE INFORMATION				
STRUCTURE	TYPE	SPAN AND SKEW	OVER	STATION
062-82-10333	Composite Prestressed Concrete Bulb-Tee Beam	1 Span @ 79'-6" Skew: 00°00'00"	Tekoppel Ave.	346+68.00 "PR-1"

KIN PROJECT INFORMATION	
DESIGNATION	PROJECT DESCRIPTION
1900308 (LEAD)	SR 62 (Lloyd) from Rosenberger Ave (4.59 miles W. of S. JCT US 41) to 2.72 miles W. of S. JCT US 41 (Wabash Ave) - Road Reconstruction
1900263	SR 62 (Lloyd) at 3.09 miles W. of US 41 (St. Joseph Ave) - Intersection Improvements
1900264	SR 62 (Lloyd) at 4.58 miles W. of US 41 (Rosenberger Ave) - Intersection Improvements
1500041	SR 62 (Lloyd) over CSX Railroad - Bridge Replacement
1600060	SR 62 (Lloyd) over Tekoppel Ave - Bridge Replacement
1602258	SR 62 (Lloyd) over Carpentier Creek - Bridge Replacement
2000187	SR 62 (Lloyd) at 2.72 miles W. of US 41 (Wabash Ave) - Intersection Improvements
1900268	SR 66 (Lloyd) at 1.79 miles E. of US 41 (Vann Ave) - Intersection Improvements
2000187	SR 66 (Lloyd) at 3.23 miles W. of US 41 - Pedestrian Bridge Replacement

NOTE TO REVIEWER:
 CONTRACT R-42287 AND ADJACENT CONTRACTS ARE CURRENTLY BEING REVIEWED BY INDOT TO ADJUST PROJECT BUNDLING. THE PROJECTS CURRENTLY SHOWN IN THIS KIN PROJECT INFORMATION TABLE ARE THOSE ALONG SR 62 (LLOYD EXPRESSWAY) FROM WABASH AVE. TO ROSENBERGER AVE., WHICH ARE CURRENTLY ANTICIPATED TO REMAIN BUNDLED IN A CONTRACT. AT THE STAGE 3 SUBMISSION THE KIN PROJECT INFORMATION TABLE WILL BE UPDATED AS NEEDED.

TRAFFIC DATA		SR 62	TEKOPPEL AVE.
A.A.D.T. (2024)		43,200 V.P.D.	4,400 V.P.D.
A.A.D.T. (2044)		47,750 V.P.D.	4,850 V.P.D.
D.H.V. (2044)		4,150 V.P.H.	500 V.P.H.
DIRECTIONAL DISTRIBUTION		51/49% EB/WB	43/57% NB/SB
TRUCKS		2.6% A.A.D.T.	0.7% A.A.D.T.
		1.0% D.H.V.	0.0% D.H.V.

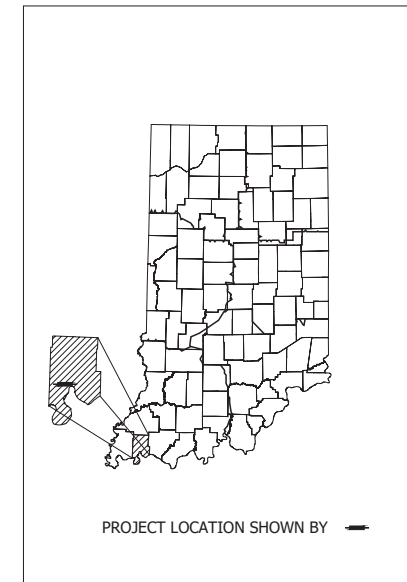
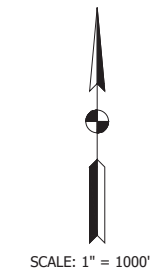
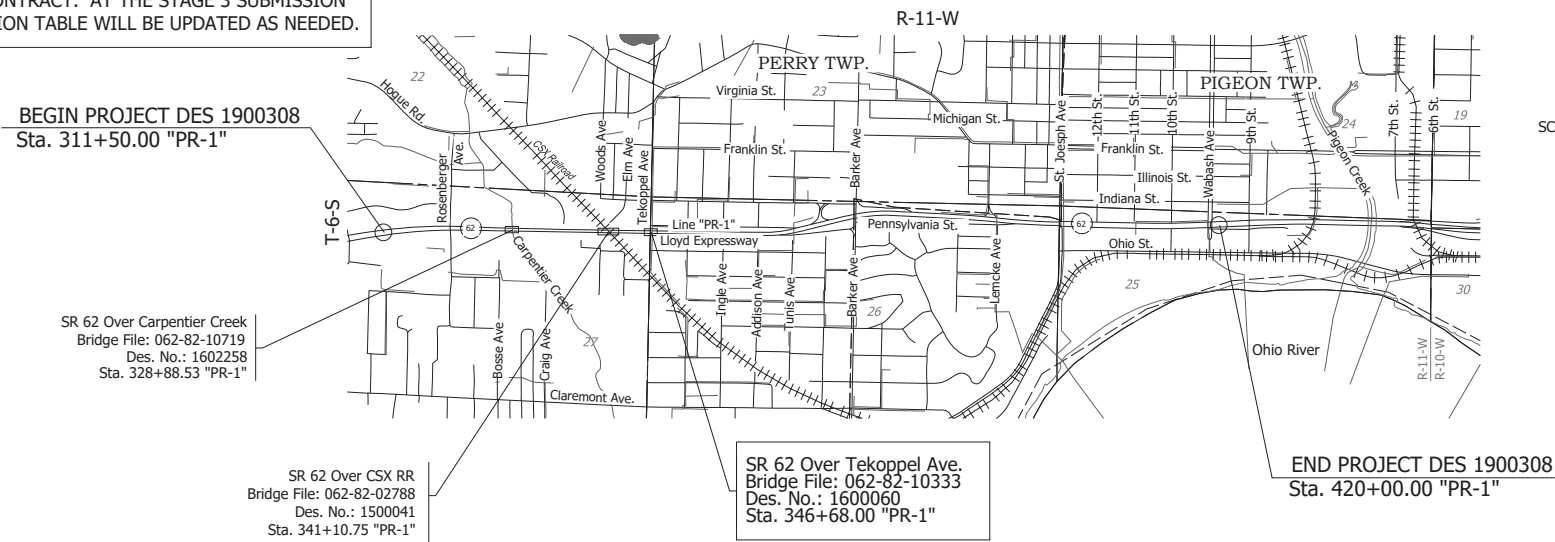
DESIGN DATA		
DESIGN SPEED	50 M.P.H.	30 M.P.H.
PROJECT DESIGN CRITERIA	Reconstruction (Non-Freeway)	3R (Non-Freeway)
FUNCTIONAL CLASSIFICATION	Principal Arterial	Local Agency Collector
RURAL/URBAN	Urban (Built-Up)	Urban (Built-Up)
TERRAIN	Level	Level
ACCESS CONTROL	Partial	None

BRIDGE PLANS FOR SPANS OVER 20 FEET

ROUTE: SR 62 AT: RP 23+39

PROJECT NO. 1900308 P.E. 1900308 R/W 1900308 CONST.

Bridge Replacement on SR 62 over Tekoppel Ave.
 Located 4.09 Miles West of US 41
 Sections 26 & 27, T-6-S, R-11-W, Perry Township, Vanderburgh County



LATITUDE: 37°58'39" N LONGITUDE: 87°37'08" W

BRIDGE LENGTH:	0.015	MI.
ROADWAY LENGTH:	2.040	MI.
TOTAL LENGTH:	2.055	MI.
MAX. GRADE:	-3.66	%

Date: Dec 02, 2022, 10:34am User Name: Tracy File: S:_2019\11-09-2021\Bridges\Tekoppel Ave_1600060\CAD\plans\Title_Sht.dwg

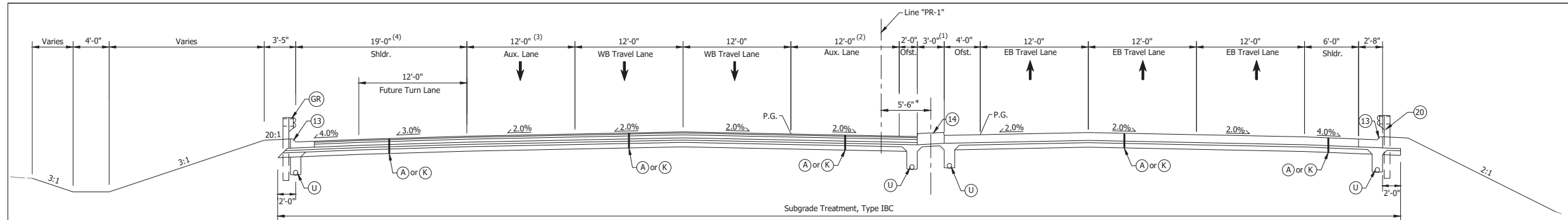


Preliminary

PLANS PREPARED BY:	LOCHMUELLER GROUP, INC.	(812) 479-6200 PHONE NUMBER
CERTIFIED BY:		DATE
APPROVED FOR LETTING:	INDIANA DEPARTMENT OF TRANSPORTATION	DATE

INDIANA DEPARTMENT OF TRANSPORTATION
 STANDARD SPECIFICATIONS DATED 2022
 TO BE USED WITH THESE PLANS

BRIDGE FILE	
062-82-10333	
DESIGNATION	
1600060	
SURVEY BOOK	SHEET
ELECTRONIC	1 of 21
CONTRACT	PROJECT
R-42287	1900308

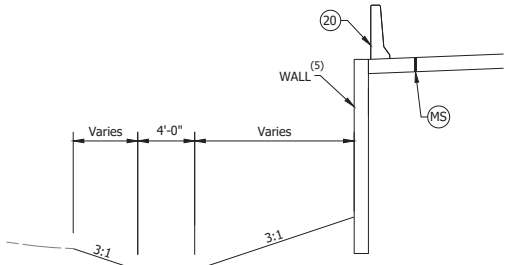


(3) Trans 12'-0" to 0'-0"; Sta. 330+00.00 to Sta. 331+00.00
 (4) Sta. 320+57.00 to Sta. 325+30.00; Curb & Gutter w/ Guardrail

TYPICAL TANGENT SECTION
 6 - LANE W/ WB LEFT TURN
 Sta. 320+57.00 to Sta. 331+00.00

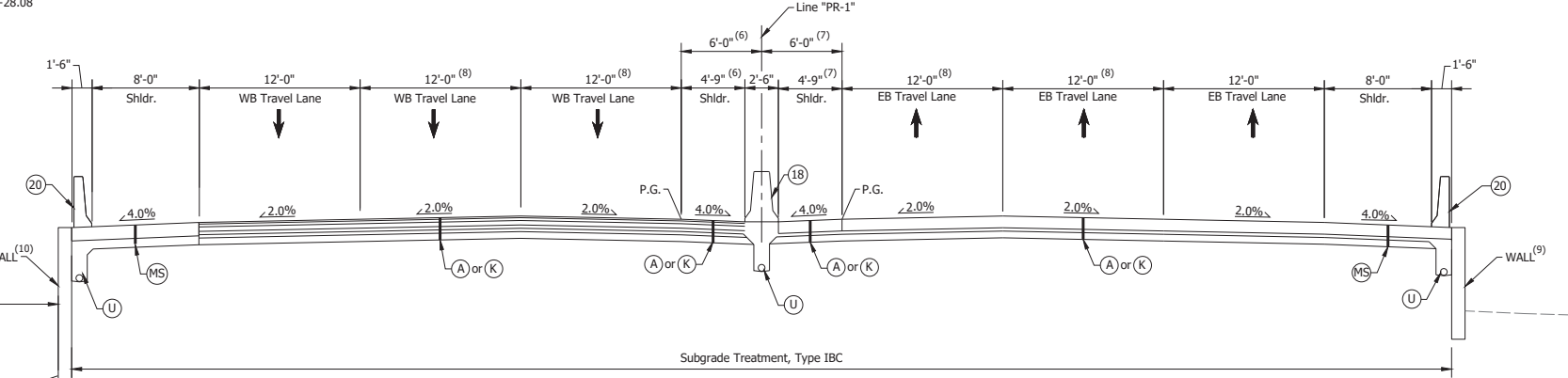
(1) Trans 3'-0" to 12'-9"; Sta. 330+00.00 to Sta. 331+00.00
 (2) Trans 12'-0" to 0'-0"; Sta. 330+00.00 to Sta. 331+00.00
 * Median Curb Transition, Sta. 330+00.00 to Sta. 331+00.00; See Construction Details

PAVING EXCEPTIONS
 Sta. 328+14.77 to Sta. 329+62.50



AUXILIARY MSE Wall w/ DITCH
 (5) Wall 1 - Sta. 325+50.00 to Sta. 328+28.08
 Wall 2 - Begin wall Sta. 329+19.98

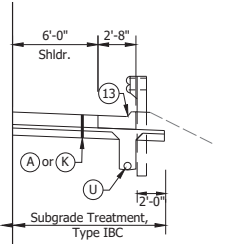
NOTE TO REVIEWER:
 DUE TO ANTICIPATED SETTLEMENT AFTER THE COMPLETION OF CONSTRUCTION THE REINFORCED CONCRETE BRIDGE APPROACHES WILL BE OVERLAID WITH 3" OF HMA AND ALL PAVEMENT ADJACENT TO THE BRIDGE WILL BE FULL DEPTH HMA WITH THE ROADSIDE BARRIER MOMENT SLABS OVERLAID WITH 3" OF HMA. PLEASE SEE THE SUBMITTED CORRESPONDENCE FILE FOR ADDITIONAL INFORMATION. THE ROADWAY TYPICAL SECTIONS WILL BE UPDATED PRIOR TO THE STAGE 3 SUBMISSION.



(10) Wall 2 - End wall Sta. 340+12.68
 Wall 4 - Sta. 341+05.82 to Sta. 346+15.00
 Wall 7 - Sta. 347+29.46 to Sta. 354+00.00
 (11) No Ditch - Sta. 346+25.00 to Sta. 354+00.00

TYPICAL TANGENT SECTION
 6 - LANE
 Sta. 331+00.00 to Sta. 354+00.00

(6) Trans 7'-9" to 4'-9"; Sta. 331+00.00 to Sta. 334+00.00
 Trans 9'-0" to 6'-0"; Sta. 331+00.00 to Sta. 334+00.00
 (7) Trans 8'-6" to 4'-9"; Sta. 331+00.00 to Sta. 334+00.00
 Trans 9'-9" to 6'-0"; Sta. 331+00.00 to Sta. 334+00.00
 (8) Trans 12'-0" to 11'-0"; Sta. 351+00.00 to Sta. 354+00.00
 (9) Wall 3 - Sta. 335+00.00 to Sta. 341+12.68
 Wall 5 - Sta. 342+05.82 to Sta. 346+15.00
 Wall 6 - Sta. 347+29.46 to Sta. 350+50.00



AUXILIARY GUARDRAIL SECTION
 Sta. 350+69.20 to Sta. 354+00.00

LEGEND

- (A) 10.5" QC/QA PCCP w/ (15' D-1 Joint Spacing w/ 1.5" Dowel Bar @ 1'-0" c/c) on 300#/SYS QC/QA HMA, 4, 76, Intermediate, OG 19.0mm, on 6" Compacted Aggregate No. 53 on Geotextile for Pavement, Type 2A on Subgrade Treatment, Type IBC
- (K) 165#/SYS QC/QA HMA, 3, 70, Surface 9.5mm on 275#/SYS QC/QA HMA, 3, 70, Intermediate 19.0mm, on 440#/SYS QC/QA HMA, 3, 64, Base 19.0mm, on 330#/SYS QC/QA HMA, 3, 64, Base 19.0mm, on 300#/SYS QC/QA HMA, 4, 76, Intermediate OG 19.0mm, on 6" Compacted Aggregate No. 53 on Geotextile for Pavement, Type 2A on Subgrade Treatment, Type IBC
- (GR) Guardrail
- (MS) R.C. Moment Slab, 12"
- (U) 6" Underdrain
- (13) Curb & Gutter, Concrete, Type B
- (14) Center Curb, B, Concrete, Modified
- (18) Concrete Barrier Wall, 45"
- (20) Concrete Railing, FT

FOR INFORMATION ONLY

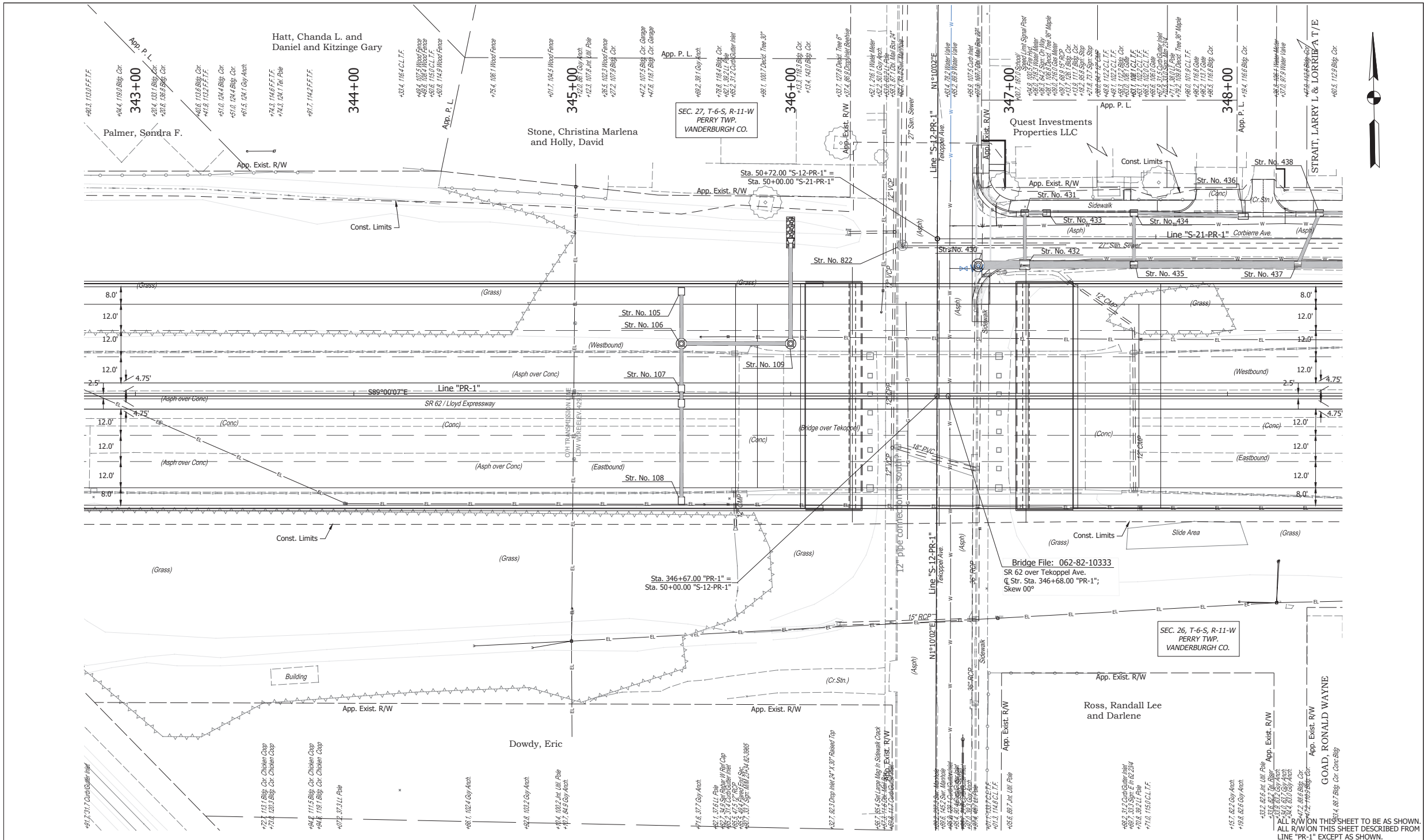
Preliminary

RECOMMENDED FOR APPROVAL	DESIGN ENGINEER	DATE
DESIGNED: JAW	DRAWN: LLF	
CHECKED: NAW	CHECKED: JAW	

INDIANA
 DEPARTMENT OF TRANSPORTATION
 TYPICAL CROSS SECTIONS
 LINE "PR-1"

HORIZONTAL SCALE	BRIDGE FILE
3/16"=1'-0"	062-82-10333
VERTICAL SCALE	DESIGNATION
N/A	1600060
SURVEY BOOK	SHEET
ELECTRONIC	3 of 21
CONTRACT	PROJECT
R-42287	1900308

Date: Dec 02, 2022, 10:34am User Name: Tracy File: S:_2019\11-09-2021\Bridges\Telapga Ave_1600060\CAD\Ascdwg\Typical PR-1.dwg



Note:
 All Stationing off Line "PR-1" Unless Otherwise Noted.
 All Station/Offset Note Stationing off Line "E".

FOR INFORMATION ONLY

Preliminary

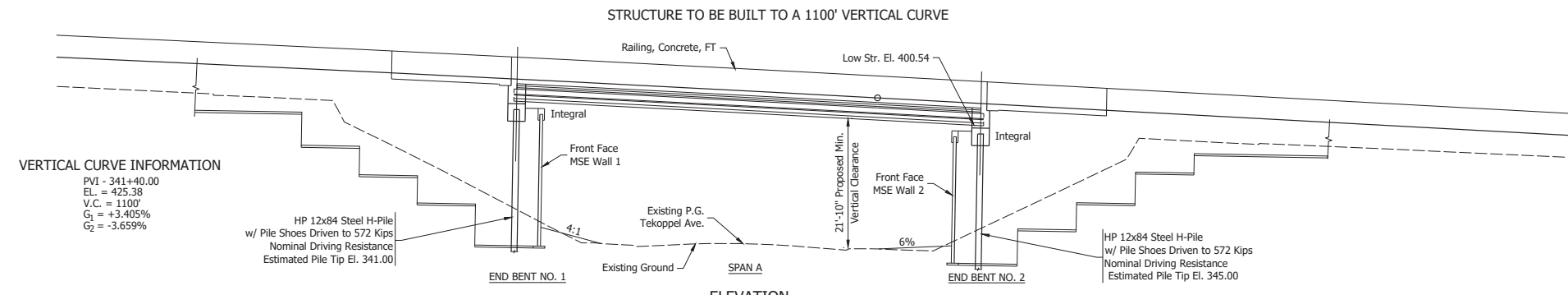
RECOMMENDED FOR APPROVAL	DESIGN ENGINEER	DATE
DESIGNED: JAW	DRAWN: LLF	
CHECKED: NAW	CHECKED: JAW	

INDIANA
 DEPARTMENT OF TRANSPORTATION
 PLAN - LINE "PR-1"
 STA. 342+75 TO STA. 348+50

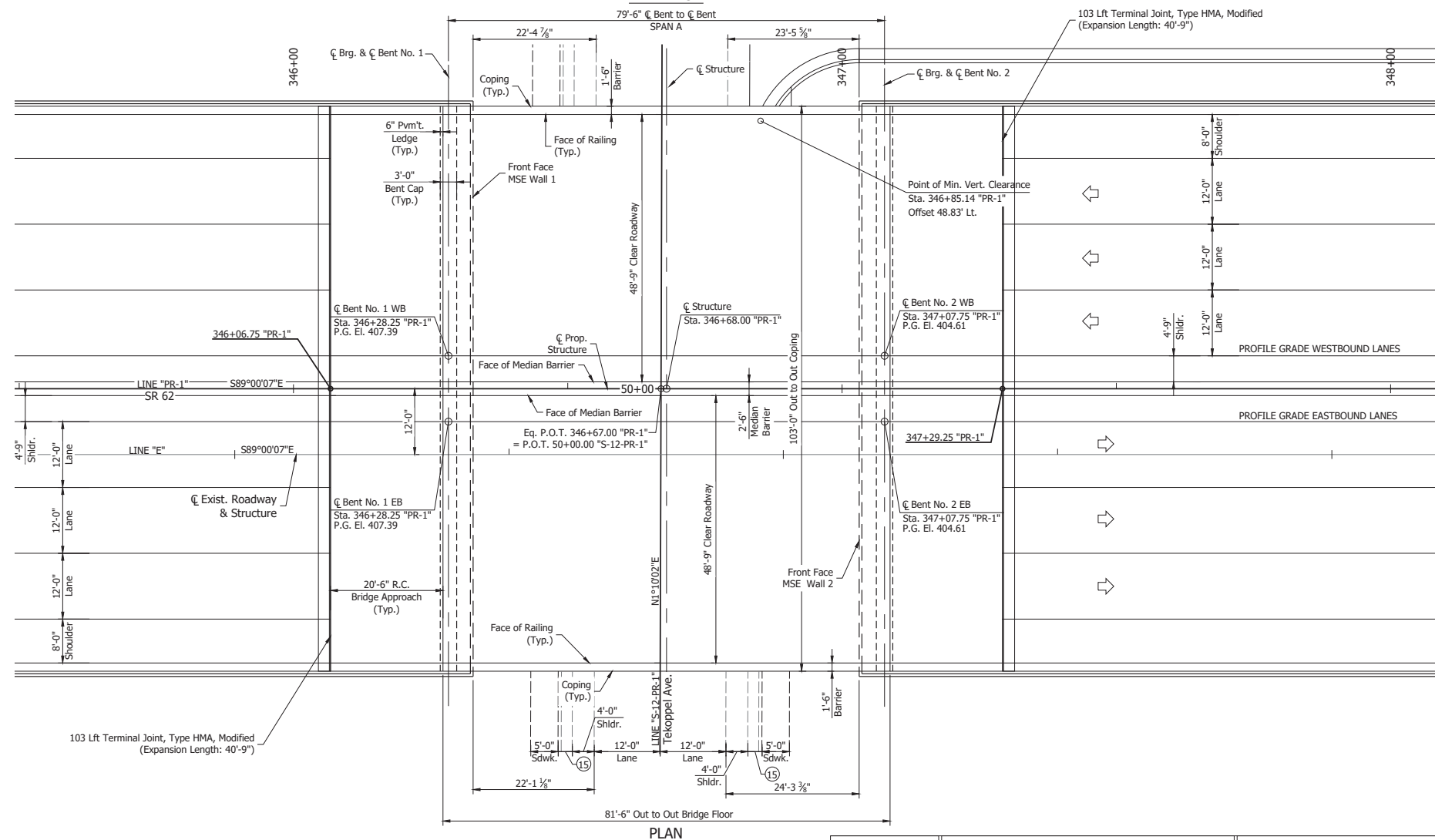
HORIZONTAL SCALE	BRIDGE FILE
1"=20'	062-82-10333
VERTICAL SCALE	DESIGNATION
N/A	1600060
SURVEY BOOK	SHEET
ELECTRONIC	6 of 21
CONTRACT	PROJECT
R-42287	1900308

Date: Dec 02, 2022, 10:36am User Name: Tracy File: S:_20191119-0271-Briggs\Teloppep_Ave_1600060\CAD\MapDrawn\Plan 337+00 - 364+50.dwg

ALL R/W ON THIS SHEET TO BE AS SHOWN.
 ALL R/W ON THIS SHEET DESCRIBED FROM
 LINE "PR-1" EXCEPT AS SHOWN.



NOTE TO REVIEWER:
 DUE TO ANTICIPATED SETTLEMENT AFTER THE COMPLETION OF CONSTRUCTION THE REINFORCED CONCRETE BRIDGE APPROACHES WILL BE OVERLAID WITH 3" OF HMA AND ALL PAVEMENT ADJACENT TO THE BRIDGE WILL BE FULL DEPTH HMA WITH THE ROADSIDE BARRIER MOMENT SLABS OVERLAID WITH 3" OF HMA. A MODIFIED TYPE PCCP TERMINAL JOINT WILL BE USED DUE TO THE ADJACENT MOMENT SLABS WHICH WILL BE OVERLAID WITH 3" OF HMA AND AN ASPHALTIC PLUG JOINT INCLUDED TO ACCOMMODATE EXPANSION. PLEASE SEE THE SUBMITTED CORRESPONDENCE FILE FOR ADDITIONAL INFORMATION. COORDINATION IS ONGOING WITH APPROPRIATE INDOT SERVICES FOR FINALIZATION OF DETAILS, WHICH WILL BE UPDATED PRIOR TO THE STAGE 3 SUBMISSION.



NOTE TO REVIEWER:
 THE MSE WALL DIMENSIONS AND DETAILS WILL BE SUBMITTED FOR INDOT GEOTECHNICAL SERVICES REVIEW PRIOR TO THE STAGE 3 SUBMISSION WITH THE APPROVED INFORMATION PROVIDED WITHIN THE STAGE 3 SUBMISSION.

LEGEND
 (15) Existing Concrete Curb & Gutter

COMPOSITE PRESTRESSED CONCRETE
 BULB-TEE BEAM BRIDGE
 1 SPAN @ 79'-6"
 CLEAR ROADWAY: 48'-9"(EB) & 48'-9"(WB)
 SKEW: 00°00'00"
 SR 62 OVER TEKOPPEL AVENUE
 VANDERBURGH COUNTY

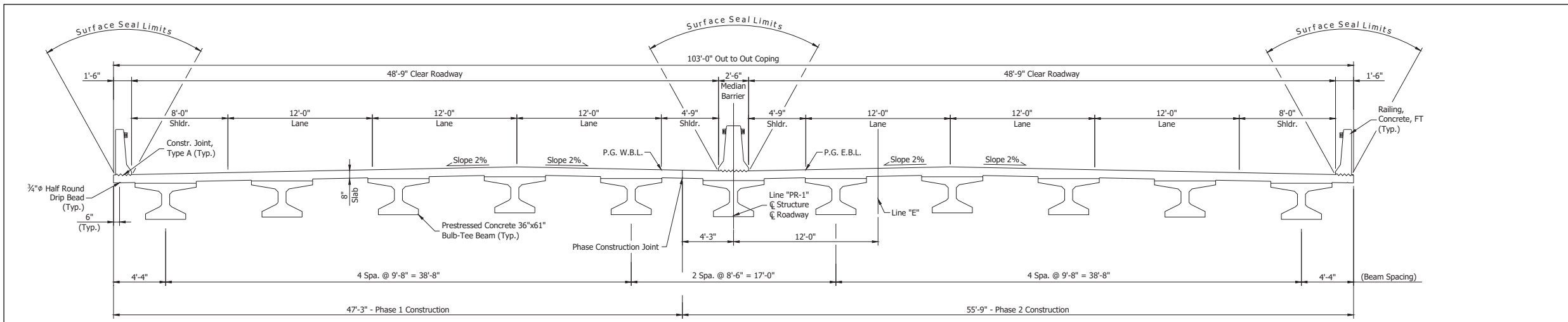
Date: Dec 02, 2022, 10:38am User Name: Tracy
 File: S:_2019\11-09-02\Bridg\Telkoppel Ave_1600060\CAD\Plans\GripPlan.dwg

Preliminary

RECOMMENDED FOR APPROVAL _____	DESIGN ENGINEER _____	DATE _____
DESIGNED: ACS	DRAWN: TAM	
CHECKED: MAR	CHECKED: ACS	

INDIANA DEPARTMENT OF TRANSPORTATION	
GENERAL PLAN	

HORIZONTAL SCALE	BRIDGE FILE
3/32"=1'-0"	062-82-10333
VERTICAL SCALE	DESIGNATION
3/32"=1'-0"	1600060
SURVEY BOOK	SHEET
ELECTRONIC	11 of 21
CONTRACT	PROJECT
R-42287	1900308



BRIDGE TYPICAL SECTION

DESIGN STRESSES

Class C Concrete: $f_c = 4,000$ psi
 Reinforcing Steel (Grade 60): $f_y = 60,000$ psi

DESIGN DATA

Live Load: Designed for HL-93 Loading, in accordance with the AASHTO LRFD Bridge Design Specifications, Eighth Edition, 2017, and subsequent interims through 2018.
 Dead Load: Actual weight plus 35 lb/ft² for future wearing surface and 15 lb/ft² for permanent metal deck forms.
 Bridge Floor: Designed with a 7 1/2" structural depth plus 1/2" sacrificial wearing surface.

SEISMIC DATA

Seismic Performance Zone: Zone 2
 Acceleration Coefficient: 0.263
 Seismic Soil Profile Type: Class D

GENERAL NOTES

- Reinforcing steel covering shall be 2 1/2" in top and 1" minimum in bottom of floor slab and 2" in all other parts, unless noted.
- Concrete requirements: Concrete in Superstructure and End Bents to be Class "C".
- Surface seal all exposed surfaces of concrete barrier railing. Estimated Quantity = x,xxx SFT.

CONSTRUCTION LOADING

The exterior beam has been checked for strength, deflection and overturning using the construction loads shown below. Cantilever overhang brackets were assumed for support of the deck overhang past the edge of the exterior beam. The finishing machine was assumed to be supported 6in. outside the vertical coping form. The top overhang brackets were assumed to be located 6in. past the edge of the vertical coping form. The bottom overhang brackets were assumed to be braced against the intersection of the beam bottom flange and web.

- Deck Falsework Loads: Designed for 15 lb/ft² for permanent metal stay-in-place deck forms, removable deck forms and 2 ft. exterior walkway.
- Construction Live Load: Designed for 20 lb/ft² extending 2 ft. past the edge of coping and 75 lb/ft vertical force applied at a distance of 6in. outside the face of coping over a 30 ft. length of the deck centered with the finishing machine.
- Finishing-Machine Load: 4500 lb. distributed over 10 ft. along the coping.
- Wind Load: Designed for 70 mph horizontal wind loading in accordance with LRFD 3.8.1.

COMPOSITE PRESTRESSED CONCRETE
 BULB-TEE BEAM BRIDGE
 1 SPAN @ 79'-6"
 CLEAR ROADWAY: 48'-9"(EB) & 48'-9"(WB)
 SKEW: 00°00'00"
 SR 62 OVER TEKOPPEL AVENUE
 VANDERBURGH COUNTY

Date: Dec 02, 2022, 10:38am User Name: Tracy File: S:_2019\11-09-2021\Bridges\Telapgar_Ave_1600060\CAD\Plans\GwpPlan.dwg

Preliminary

RECOMMENDED FOR APPROVAL _____ DESIGN ENGINEER _____ DATE _____	INDIANA DEPARTMENT OF TRANSPORTATION		HORIZONTAL SCALE	BRIDGE FILE
			1/4"=1'-0"	062-82-10333
DESIGNED: _____ ACS DRAWN: _____ TAM	GENERAL PLAN		VERTICAL SCALE	DESIGNATION
CHECKED: _____ MAR CHECKED: _____ ACS			1/4"=1'-0"	1600060
			SURVEY BOOK	SHEET
			ELECTRONIC	12 of 21
			CONTRACT	PROJECT
			R-42287	1900308