

| | |
|----------|--------------|
| PROJECT | DESIGNATION |
| 1900308 | 1500041 |
| CONTRACT | BRIDGE FILE |
| R-42287 | 062-82-02788 |

| STRUCTURE INFORMATION | | | | |
|-----------------------|--|-------------------------------------|--------|------------------|
| STRUCTURE | TYPE | SPAN AND SKEW | OVER | STATION |
| 062-82-02788 | Composite Prestressed Concrete Bulb-TEE Beam | 1 Span @ 89'-6" Skew: 45°00'00" Lt. | CSX RR | 341+10.75 "PR-1" |

| KIN PROJECT INFORMATION | |
|-------------------------|--|
| DESIGNATION | PROJECT DESCRIPTION |
| 1900308 (LEAD) | SR 62 (Lloyd) from Rosenberger Ave (4.59 miles W. of S. JCT US 41) to 2.72 miles W. of S. JCT US 41 (Wabash Ave) - Road Reconstruction |
| 1900263 | SR 62 (Lloyd) at 3.09 miles W. of US 41 (St. Joseph Ave) - Intersection Improvements |
| 1900264 | SR 62 (Lloyd) at 4.58 miles W. of US 41 (Rosenberger Ave) - Intersection Improvements |
| 1500041 | SR 62 (Lloyd) over CSX Railroad - Bridge Replacement |
| 1600060 | SR 62 (Lloyd) over Tekoppel Ave - Bridge Replacement |
| 1602258 | SR 62 (Lloyd) over Carpentier Creek - Bridge Replacement |
| 2000187 | SR 62 (Lloyd) at 2.72 miles W. of US 41 (Wabash Ave) - Intersection Improvements |
| 1900268 | SR 66 (Lloyd) at 1.79 miles E. of US 41 (Vann Ave) - Intersection Improvements |
| 2000187 | SR 66 (Lloyd) at 3.23 miles W. of US 41 - Pedestrian Bridge Replacement |

NOTE TO REVIEWER:
 CONTRACT R-42287 AND ADJACENT CONTRACTS ARE CURRENTLY BEING REVIEWED BY INDOT TO ADJUST PROJECT BUNDLING. THE PROJECTS CURRENTLY SHOWN IN THIS KIN PROJECT INFORMATION TABLE ARE THOSE ALONG SR 62 (LLOYD EXPRESSWAY) FROM WABASH AVE. TO ROSENBERGER AVE., WHICH ARE CURRENTLY ANTICIPATED TO REMAIN BUNDLED IN A CONTRACT. AT THE STAGE 3 SUBMISSION THE KIN PROJECT INFORMATION TABLE WILL BE UPDATED AS NEEDED.

INDIANA DEPARTMENT OF TRANSPORTATION



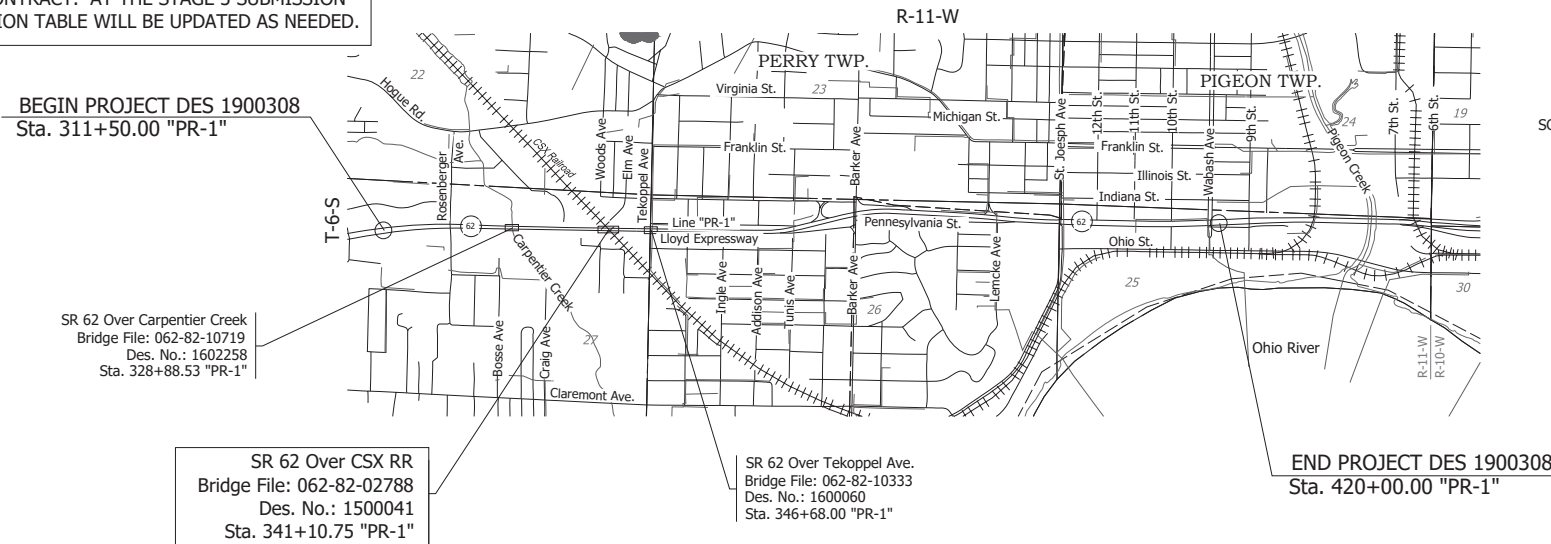
BRIDGE PLANS

FOR SPANS OVER 20 FEET

ROUTE: SR 62 AT: RP 23+24

PROJECT NO. 1900308 P.E.
 1900308 R/W
 1900308 CONST.

Bridge Replacement on SR 62 over CSX RR
 Located 4.19 Miles West of US 41
 Section 27, T-6-S, R-11-W, Perry Township, Vanderburgh County



LOCATION MAP

| TRAFFIC DATA | | |
|--------------------------|--|------------------------------|
| A.A.D.T. (2024) | | 43,200 V.P.D. |
| A.A.D.T. (2044) | | 47,750 V.P.D. |
| D.H.V. (2044) | | 4,150 V.P.H. |
| DIRECTIONAL DISTRIBUTION | | 51/49% EB/WB |
| TRUCKS | | 2.6% A.A.D.T. 1.0% D.H.V. |

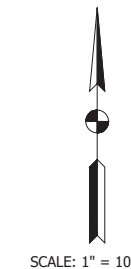
| DESIGN DATA | |
|---------------------------|------------------------------|
| DESIGN SPEED | 50 M.P.H. |
| PROJECT DESIGN CRITERIA | Reconstruction (Non-Freeway) |
| FUNCTIONAL CLASSIFICATION | Principal Arterial |
| RURAL/URBAN | Urban (Built-Up) |
| TERRAIN | Level |
| ACCESS CONTROL | Partial |



PROJECT LOCATION SHOWN BY

LATITUDE: 37°58'39" N LONGITUDE: 87°37'18" W

| | | |
|-----------------|-------|-----|
| BRIDGE LENGTH: | 0.018 | MI. |
| ROADWAY LENGTH: | 2.037 | MI. |
| TOTAL LENGTH: | 2.055 | MI. |
| MAX. GRADE: | -3.66 | % |



INDIANA DEPARTMENT OF TRANSPORTATION
 STANDARD SPECIFICATIONS DATED 2022
 TO BE USED WITH THESE PLANS

Date: Dec 02, 2022, 9:03am User Name: Tracy
 File: S:_2019\19-0021\Bridges\CSX RR_1500041\CAD\Plans\Title_SRI.dwg



Preliminary

| | | |
|-----------------------|--------------------------------------|--------------------------------|
| PLANS PREPARED BY: | LOCHMUELLER GROUP, INC. | (812) 479-6200 PHONE NUMBER |
| CERTIFIED BY: | | DATE |
| APPROVED FOR LETTING: | INDIANA DEPARTMENT OF TRANSPORTATION | DATE |

| | |
|--------------|---------|
| BRIDGE FILE | |
| 062-82-02788 | |
| DESIGNATION | |
| 1500041 | |
| SURVEY BOOK | SHEET |
| ELECTRONIC | 1 of 23 |
| CONTRACT | PROJECT |
| R-42287 | 1900308 |

UTILITIES

ELECTRIC DISTRIBUTION
 CENTERPOINT / VECTREN ENERGY
 JODY CHAPMAN
 16000 ALLISONVILL RD
 NOBLESVILLE, IN 46061
 OFFICE PHONE: (812) 491-4707
 EMAIL: JODY.CHAPMAN@CENTERPOINTENERGY.COM

COMMUNICATIONS
 AT&T DISTRIBUTION
 MARC CLARK
 134 NW 6th STREET
 EVANSVILLE, IN 47708
 OFFICE PHONE: 812-464-6050
 EMAIL: MC3429@ATT.COM

GAS
 CENTERPOINT / VECTREN ENERGY
 INTEGRITY DESIGN ENGINEERING
 RAJ BRAHMBHATT
 28100 TORCH PKWY
 WARRENVILLE, IL 60555
 OFFICE PHONE: (630) 225-6086
 EMAIL: RBRAHMBHATT@ENENGINEERING.COM

COMMUNICATIONS
 SPECTRUM COMMUNICATIONS/INSIGHT
 SCOTT DOTSON
 1900 N. FARES AVE
 EVANSVILLE, IN 47711
 EMAIL: DOTSON.S@INSIGHTCOM.COM

GAS
 AMERESCO EVANSVILLE
 NATE BARTLETT
 2324 W LLOYD EXPY
 EVANSVILLE, IN 47712
 OFFICE PHONE: (812) 422-6505
 EMAIL: NBARTLETT@AMERESCO.COM

COMMUNICATIONS
 WOW INC.
 JAMES FAMBROUGH
 6600 HANK AVE
 EVANSVILLE, IN 47715
 OFFICE PHONE: (812) 437-0395
 EMAIL: JAMES.FAMBROUGH@WOWINC.COM

SEWER
 EVANSVILLE WATER AND SEWER UTILITY
 JACLYN SHMITT
 1931 ALLENS LN
 EVANSVILLE, IN 47720
 OFFICE PHONE: (812) 436-4522
 CELL PHONE: (812) 470-4085
 EMAIL: JSCHMITT@EWSU.COM

COMMUNICATIONS
 MCI
 OSP TRANSPORT ENGINEER
 RON KOCIENSKI
 720 WEST HENRY ST
 INDIANAPOLIS, IN 46225
 OFFICE PHONE: (518) 424-3950
 EMAIL: RONALD.KOCIENSKI@VERIZON.COM

WATER
 EVANSVILLE WATER AND SEWER UTILITY
 RYAN MAYER
 1 SE 9TH STREET
 SUITE 200
 EVANSVILLE, IN 47708
 OFFICE PHONE: (812) 421-2120
 EMAIL: RJMAYER@EWSU.COM

FIBER OPTIC
 CROWN CASTLE
 CRAIG BROWN
 800 OLIVER WAY
 SUITE 1
 INDIANAPOLIS, IN 46225
 OFFICE PHONE: (317) 819-86418
 EMAIL: CRAIG.BROWN@CROWNCastle.COM



REVISIONS

| SHEET NO. | DATE | REVISED |
|-----------|------|---------|
| | | |
| | | |
| | | |
| | | |
| | | |
| | | |
| | | |

| INDEX | |
|-----------|------------------------------------|
| SHEET NO. | SUBJECT |
| 1 | TITLE SHEET |
| 2 | INDEX |
| 3 | TYPICAL CROSS SECTIONS LINE "PR-1" |
| 4-5 | PHASE CONSTRUCTION BRIDGE TYPICALS |
| 6-7 | PLAN & PROFILE LINE "PR-1" |
| 8-11 | SOIL BORINGS |
| 12 | LAYOUT |
| 13-14 | GENERAL PLAN |
| 15 | BRIDGE SUMMARY OF QUANTITIES |
| 16-23 | CROSS SECTIONS LINE "PR-1" |
| | |
| | |
| | |
| | |
| | |
| | |
| | |
| | |
| | |
| | |
| | |
| | |
| | |
| | |
| | |
| | |
| | |
| | |
| | |
| | |
| | |
| | |

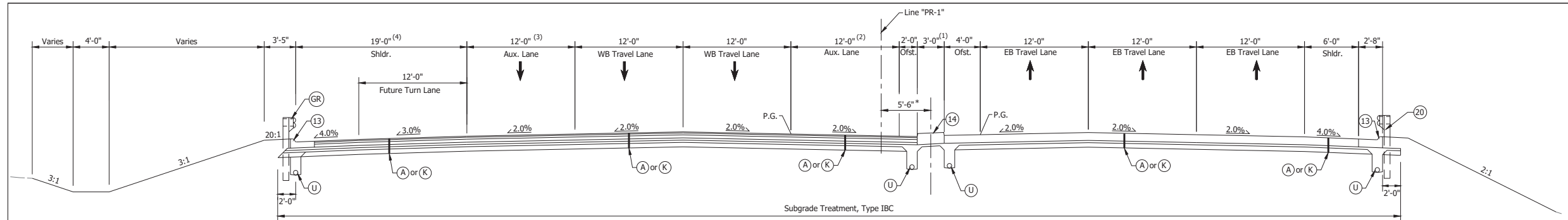
Date: Dec 02, 2022, 9:03am User Name: Tracy
 File: S:_2019\11-19-2021\Bridges\CSX_IR_1500041\CAD\Plans\Index.dwg

Preliminary

| | | |
|--------------------------|-----------------|------|
| RECOMMENDED FOR APPROVAL | DESIGN ENGINEER | DATE |
| | | |
| DESIGNED: ACS | DRAWN: TAM | |
| CHECKED: MAR | CHECKED: ACS | |

| |
|---|
| INDIANA DEPARTMENT OF TRANSPORTATION |
| INDEX |

| | |
|------------------|--------------|
| HORIZONTAL SCALE | BRIDGE FILE |
| NONE | 062-82-02788 |
| VERTICAL SCALE | DESIGNATION |
| NONE | 1500041 |
| SURVEY BOOK | SHEET |
| ELECTRONIC | 2 of 23 |
| CONTRACT | PROJECT |
| R-42287 | 1900308 |

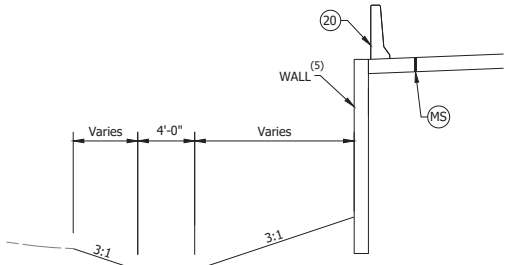


(3) Trans 12'-0" to 0'-0"; Sta. 330+00.00 to Sta. 331+00.00
 (4) Sta. 320+57.00 to Sta. 325+30.00; Curb & Gutter w/ Guardrail

TYPICAL TANGENT SECTION
6 - LANE W/ WB LEFT TURN
 Sta. 320+57.00 to Sta. 331+00.00

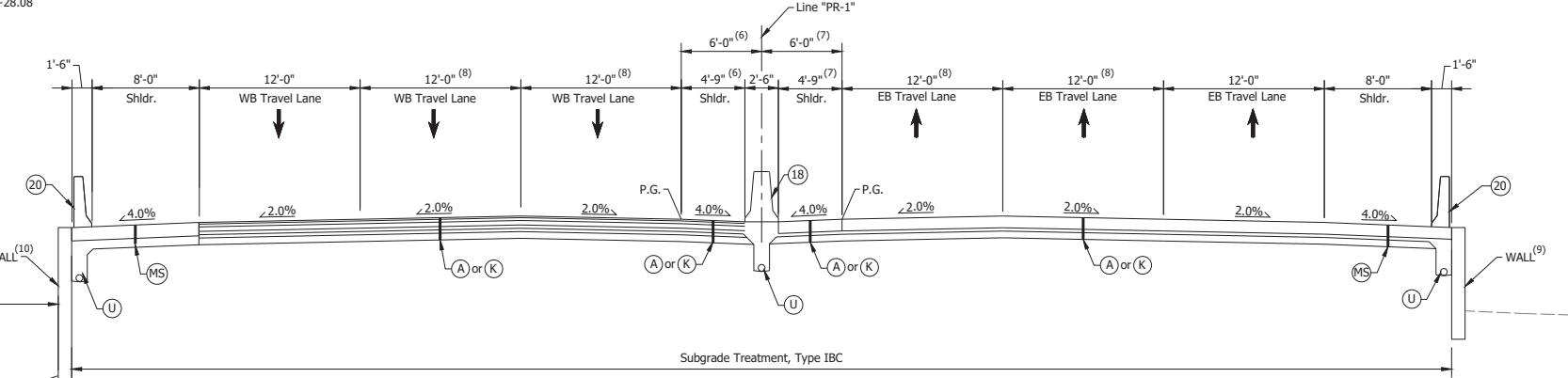
(1) Trans 3'-0" to 12'-9"; Sta. 330+00.00 to Sta. 331+00.00
 (2) Trans 12'-0" to 0'-0"; Sta. 330+00.00 to Sta. 331+00.00
 * Median Curb Transition, Sta. 330+00.00 to Sta. 331+00.00; See Construction Details

PAVING EXCEPTIONS
 Sta. 328+14.77 to Sta. 329+62.50



AUXILIARY MSE Wall w/ DITCH
 (5) Wall 1 - Sta. 325+50.00 to Sta. 328+28.08
 Wall 2 - Begin wall Sta. 329+19.98

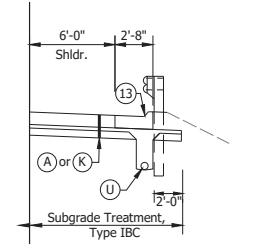
NOTE TO REVIEWER:
 DUE TO ANTICIPATED SETTLEMENT AFTER THE COMPLETION OF CONSTRUCTION THE REINFORCED CONCRETE BRIDGE APPROACHES WILL BE OVERLAID WITH 3" OF HMA AND ALL PAVEMENT ADJACENT TO THE BRIDGE WILL BE FULL DEPTH HMA WITH THE ROADSIDE BARRIER MOMENT SLABS OVERLAID WITH 3" OF HMA. PLEASE SEE THE SUBMITTED CORRESPONDENCE FILE FOR ADDITIONAL INFORMATION. THE ROADWAY TYPICAL SECTIONS WILL BE UPDATED PRIOR TO THE STAGE 3 SUBMISSION.



(10) Wall 2 - End wall Sta. 340+12.68
 Wall 4 - Sta. 341+05.82 to Sta. 346+15.00
 Wall 7 - Sta. 347+29.46 to Sta. 354+00.00
 (11) No Ditch - Sta. 346+25.00 to Sta. 354+00.00

TYPICAL TANGENT SECTION
6 - LANE
 Sta. 331+00.00 to Sta. 354+00.00

(6) Trans 7'-9" to 4'-9"; Sta. 331+00.00 to Sta. 334+00.00
 Trans 9'-0" to 6'-0"; Sta. 331+00.00 to Sta. 334+00.00
 (7) Trans 8'-6" to 4'-9"; Sta. 331+00.00 to Sta. 334+00.00
 Trans 9'-9" to 6'-0"; Sta. 331+00.00 to Sta. 334+00.00
 (8) Trans 12'-0" to 11'-0"; Sta. 351+00.00 to Sta. 354+00.00
 (9) Wall 3 - Sta. 335+00.00 to Sta. 341+12.68
 Wall 5 - Sta. 342+05.82 to Sta. 346+15.00
 Wall 6 - Sta. 347+29.46 to Sta. 350+50.00



AUXILIARY GUARDRAIL SECTION
 Sta. 350+69.20 to Sta. 354+00.00

LEGEND

- (A) 10.5" QC/QA PCCP w/ (15" D-1 Joint Spacing w/ 1.5" Dowel Bar @ 1'-0" c/c) on 300#/SYS QC/QA HMA, 4, 76, Intermediate, OG 19.0mm, on 6" Compacted Aggregate No. 53 on Geotextile for Pavement, Type 2A on Subgrade Treatment, Type IBC
- (K) 165#/SYS QC/QA HMA, 3, 70, Surface 9.5mm on 275#/SYS QC/QA HMA, 3, 70, Intermediate 19.0mm, on 440#/SYS QC/QA HMA, 3, 64, Base 19.0mm, on 330#/SYS QC/QA HMA, 3, 64, Base 19.0mm, on 300#/SYS QC/QA HMA, 4, 76, Intermediate OG 19.0mm, on 6" Compacted Aggregate No. 53 on Geotextile for Pavement, Type 2A on Subgrade Treatment, Type IBC
- (GR) Guardrail
- (MS) R.C. Moment Slab, 12"
- (U) 6" Underdrain
- (13) Curb & Gutter, Concrete, Type B
- (14) Center Curb, B, Concrete, Modified
- (18) Concrete Barrier Wall, 45"
- (20) Concrete Railing, FT

FOR INFORMATION ONLY

Preliminary

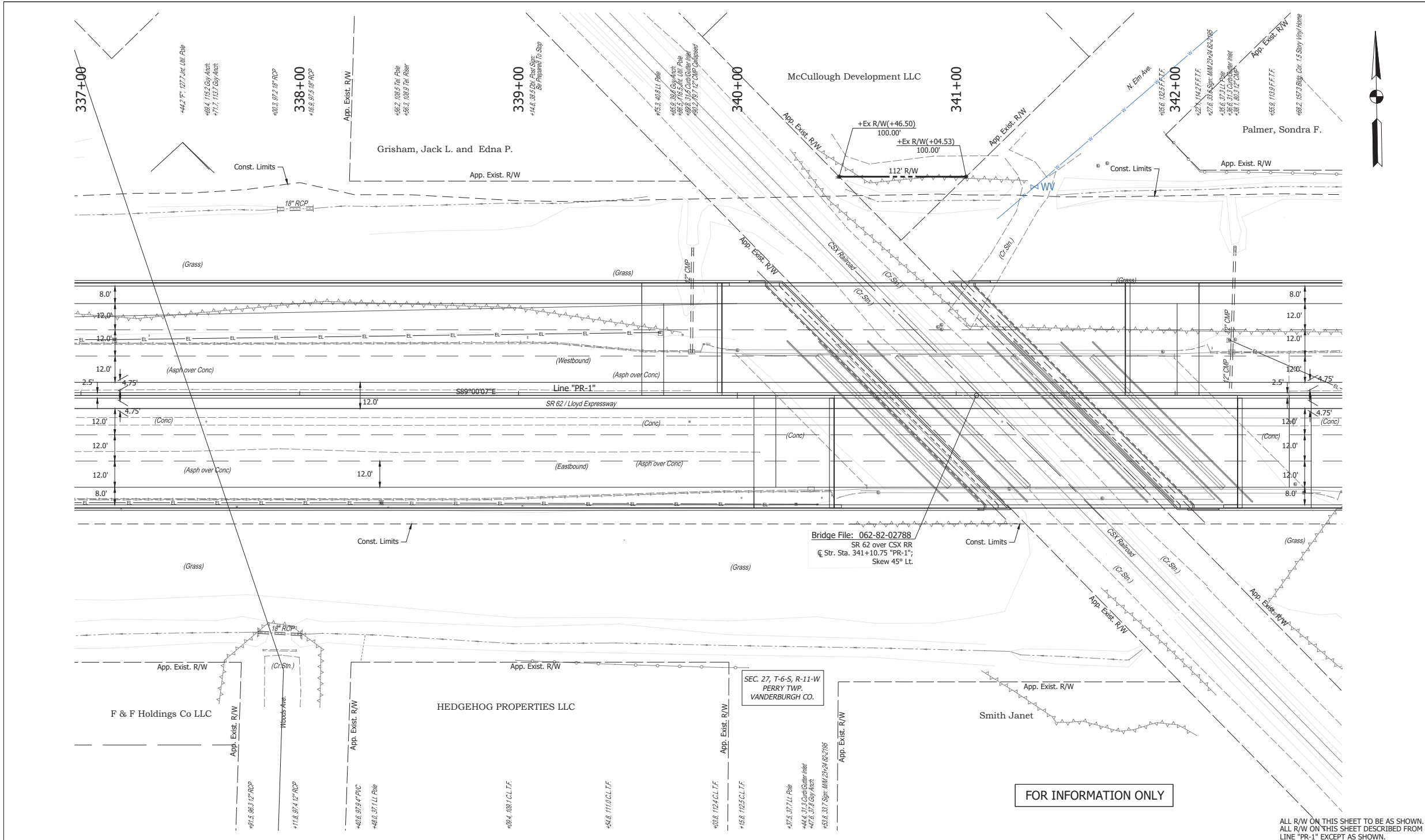
| | | |
|--------------------------|-----------------|------|
| RECOMMENDED FOR APPROVAL | DESIGN ENGINEER | DATE |
| DESIGNED: JAW | DRAWN: LLF | |
| CHECKED: NAW | CHECKED: JAW | |

INDIANA
 DEPARTMENT OF TRANSPORTATION

TYPICAL CROSS SECTIONS
 LINE "PR-1"

| | |
|------------------|--------------|
| HORIZONTAL SCALE | BRIDGE FILE |
| 3/16"=1'-0" | 062-82-02788 |
| VERTICAL SCALE | DESIGNATION |
| N/A | 1500041 |
| SURVEY BOOK | SHEET |
| ELECTRONIC | 3 of 23 |
| CONTRACT | PROJECT |
| R-42287 | 1900308 |

Date: Dec 02, 2022, 9:03am User Name: Tracy
 File: S:_2019\11-19-2021\Bridges\CSX_BR_1500041\CAD\Misc\Drawings\Typicals PR-1.dwg



Note:
 All Stationing off Line "PR-1" Unless Otherwise Noted.
 All Station/Offset Note Stationing off Line "E".

Preliminary

| | | |
|--------------------------|-----------------|------|
| RECOMMENDED FOR APPROVAL | DESIGN ENGINEER | DATE |
| DESIGNED: JAW | DRAWN: LLF | |
| CHECKED: NAW | CHECKED: JAW | |

INDIANA
 DEPARTMENT OF TRANSPORTATION
 PLAN - LINE "PR-1"
 STA. 337+00 to STA. 342+75

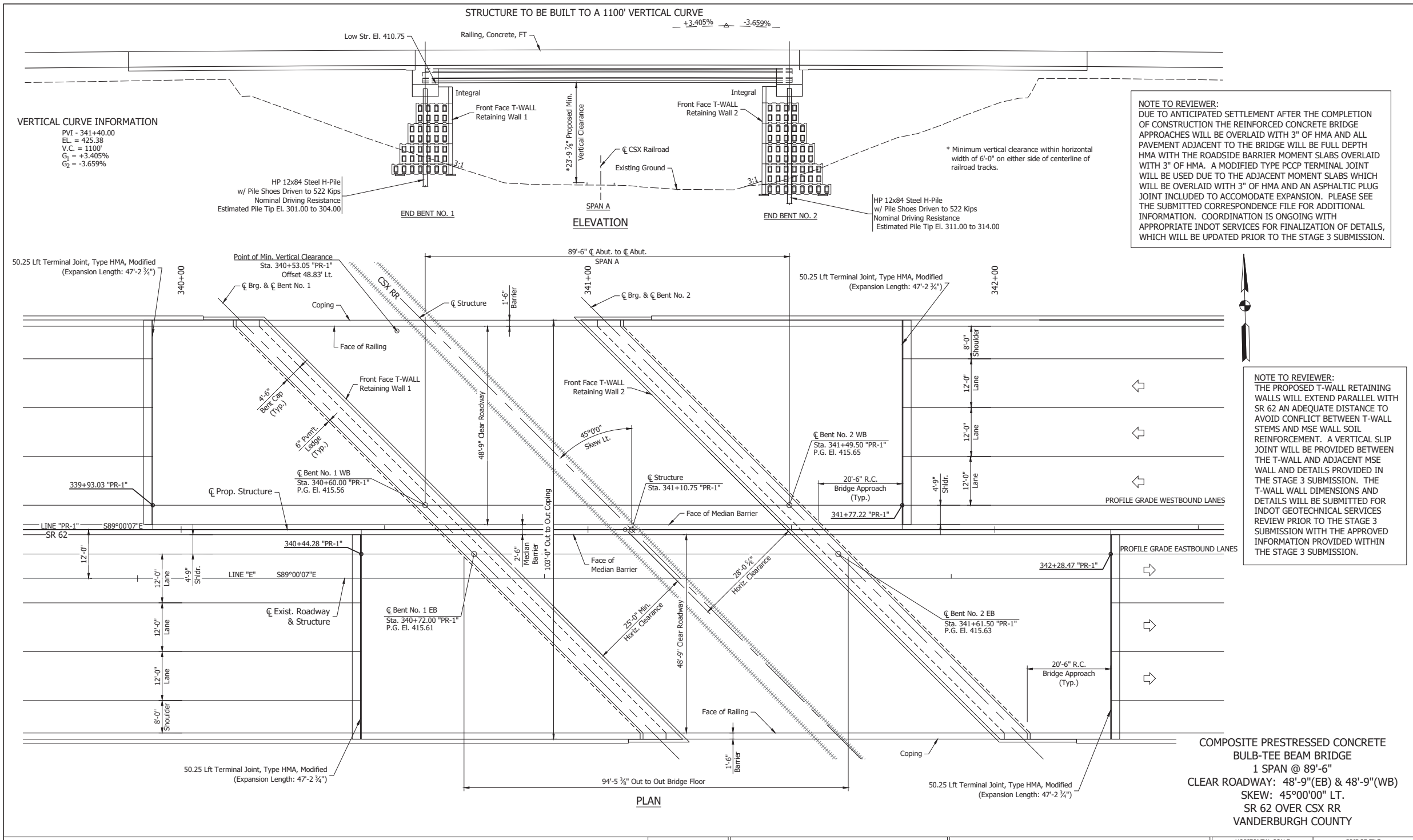
| | |
|------------------|--------------|
| HORIZONTAL SCALE | BRIDGE FILE |
| 1"=20' | 062-82-02788 |
| VERTICAL SCALE | DESIGNATION |
| N/A | 1500041 |
| SURVEY BOOK | SHEET |
| ELECTRONIC | 6 of 23 |
| CONTRACT | PROJECT |
| R-42287 | 1900308 |

Date: Dec 02, 2022, 9:05am User Name: Tracy
 File: S:_2019\11-09-2022\Bridges\CSX_RR_1500041\CADD\Misc\Drawings\Plan 337+00 - 366+50.dwg

ALL R/W ON THIS SHEET TO BE AS SHOWN.
 ALL R/W ON THIS SHEET DESCRIBED FROM
 LINE "PR-1" EXCEPT AS SHOWN.

FOR INFORMATION ONLY

Bridge File: 062-82-02788
 SR 62 over CSX RR
 C. Str. Sta. 341+10.75 "PR-1";
 Skew 45° Lt.



VERTICAL CURVE INFORMATION
 PVI = 341+40.00
 EL. = 425.38
 V.C. = 1100'
 G₁ = +3.405%
 G₂ = -3.659%

NOTE TO REVIEWER:
 DUE TO ANTICIPATED SETTLEMENT AFTER THE COMPLETION OF CONSTRUCTION THE REINFORCED CONCRETE BRIDGE APPROACHES WILL BE OVERLAID WITH 3" OF HMA AND ALL PAVEMENT ADJACENT TO THE BRIDGE WILL BE FULL DEPTH HMA WITH THE ROADSIDE BARRIER MOMENT SLABS OVERLAID WITH 3" OF HMA. A MODIFIED TYPE PCCP TERMINAL JOINT WILL BE USED DUE TO THE ADJACENT MOMENT SLABS WHICH WILL BE OVERLAID WITH 3" OF HMA AND AN ASPHALTIC PLUG JOINT INCLUDED TO ACCOMMODATE EXPANSION. PLEASE SEE THE SUBMITTED CORRESPONDENCE FILE FOR ADDITIONAL INFORMATION. COORDINATION IS ONGOING WITH APPROPRIATE INDOT SERVICES FOR FINALIZATION OF DETAILS, WHICH WILL BE UPDATED PRIOR TO THE STAGE 3 SUBMISSION.

NOTE TO REVIEWER:
 THE PROPOSED T-WALL RETAINING WALLS WILL EXTEND PARALLEL WITH SR 62 AN ADEQUATE DISTANCE TO AVOID CONFLICT BETWEEN T-WALL STEMS AND MSE WALL SOIL REINFORCEMENT. A VERTICAL SLIP JOINT WILL BE PROVIDED BETWEEN THE T-WALL AND ADJACENT MSE WALL AND DETAILS PROVIDED IN THE STAGE 3 SUBMISSION. THE T-WALL WALL DIMENSIONS AND DETAILS WILL BE SUBMITTED FOR INDOT GEOTECHNICAL SERVICES REVIEW PRIOR TO THE STAGE 3 SUBMISSION WITH THE APPROVED INFORMATION PROVIDED WITHIN THE STAGE 3 SUBMISSION.

Preliminary

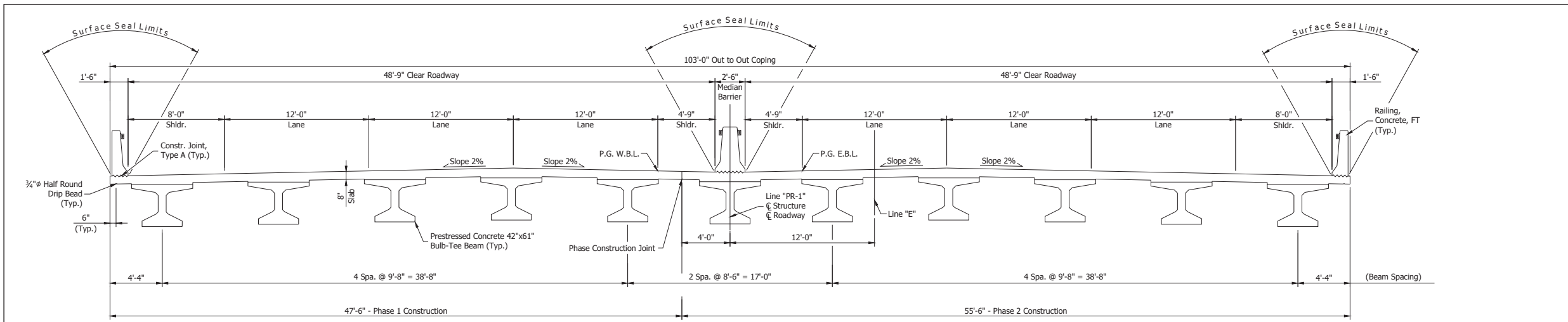
| | | |
|--------------------------|-----------------|------|
| RECOMMENDED FOR APPROVAL | DESIGN ENGINEER | DATE |
| DESIGNED: ACS | DRAWN: TAM | |
| CHECKED: MAR | CHECKED: ACS | |

INDIANA
 DEPARTMENT OF TRANSPORTATION
 GENERAL PLAN

| | |
|------------------|--------------|
| HORIZONTAL SCALE | BRIDGE FILE |
| 3/32"=1'-0" | 062-82-02788 |
| VERTICAL SCALE | DESIGNATION |
| 3/32"=1'-0" | 1500041 |
| SURVEY BOOK | SHEET |
| ELECTRONIC | 13 of 23 |
| CONTRACT | PROJECT |
| R-42287 | 1900308 |

Date: Dec 02, 2022, 9:07am User Name: Tracy File: S:_2019\119-0071\Bridges\CSX RR_1500041\CAD\Plans\Gmp\plan.dwg

COMPOSITE PRESTRESSED CONCRETE
 BULB-TEE BEAM BRIDGE
 1 SPAN @ 89'-6"
 CLEAR ROADWAY: 48'-9"(EB) & 48'-9"(WB)
 SKEW: 45°00'00" LT.
 SR 62 OVER CSX RR
 VANDERBURGH COUNTY



BRIDGE TYPICAL SECTION

DESIGN STRESSES

Class C Concrete: $f_c = 4,000$ psi
 Reinforcing Steel (Grade 60): $f_y = 60,000$ psi

DESIGN DATA

Live Load: Designed for HL-93 Loading, in accordance with the AASHTO LRFD Bridge Design Specifications, Eighth Edition, 2017, and subsequent interims through 2018.
 Dead Load: Actual weight plus 35 lb/ft² for future wearing surface and 15 lb/ft² for permanent metal deck forms.
 Bridge Floor: Designed with a 7 1/2" structural depth plus 1/2" sacrificial wearing surface.

SEISMIC DATA

Seismic Performance Zone: Zone 2
 Acceleration Coefficient: 0.264
 Seismic Soil Profile Type: Class D

GENERAL NOTES

- Reinforcing steel covering shall be 2 1/2" in top and 1" minimum in bottom of floor slab, 4" in bottom of footings, and 2" in all other parts, unless noted.
- Concrete requirements: Concrete in Superstructure and End Bents to be Class "C".
- Surface seal all exposed surfaces of concrete barrier railing. Estimated Quantity = x,xxx SFT.

CONSTRUCTION LOADING

The exterior beam has been checked for strength, deflection and overturning using the construction loads shown below. Cantilever overhang brackets were assumed for support of the deck overhang past the edge of the exterior beam. The finishing machine was assumed to be supported 6in. outside the vertical coping form. The top overhang brackets were assumed to be located 6in. past the edge of the vertical coping form. The bottom overhang brackets were assumed to be braced against the intersection of the beam bottom flange and web.

- Deck Falsework Loads: Designed for 15 lb/ft² for permanent metal stay-in-place deck forms, removable deck forms and 2 ft. exterior walkway.
- Construction Live Load: Designed for 20 lb/ft² extending 2 ft. past the edge of coping and 75 lb/ft vertical force applied at a distance of 6in. outside the face of coping over a 30 ft. length of the deck centered with the finishing machine.
- Finishing-Machine Load: 4500 lb. distributed over 10 ft. along the coping.
- Wind Load: Designed for 70 mph horizontal wind loading in accordance with LRFD 3.8.1.

COMPOSITE PRESTRESSED CONCRETE BULB-TEE BEAM BRIDGE
 1 SPAN @ 89'-6"
 CLEAR ROADWAY: 48'-9"(EB) & 48'-9"(WB)
 SKEW: 45°00'00" LT.
 SR 62 OVER CSX RR
 VANDERBURGH COUNTY

Date: Dec 02, 2022, 9:07am User Name: Tracy File: S:_2019\119-0071\Bridges\CSX_RR_1500041\CAD\Plans\Gampaln.dwg

| | | | | |
|--------------------------------|--------------|--------------------------------------|------------------|--------------|
| RECOMMENDED FOR APPROVAL _____ | | INDIANA DEPARTMENT OF TRANSPORTATION | HORIZONTAL SCALE | BRIDGE FILE |
| DESIGNED: ACS | DRAWN: TAM | | 1/4"=1'-0" | 062-82-02788 |
| CHECKED: MAR | CHECKED: ACS | GENERAL PLAN | VERTICAL SCALE | DESIGNATION |
| | | | 1/4"=1'-0" | 1500041 |
| | | | SURVEY BOOK | SHEET |
| | | | ELECTRONIC | 14 of 23 |
| | | | CONTRACT | PROJECT |
| | | | R-42287 | 1900308 |