



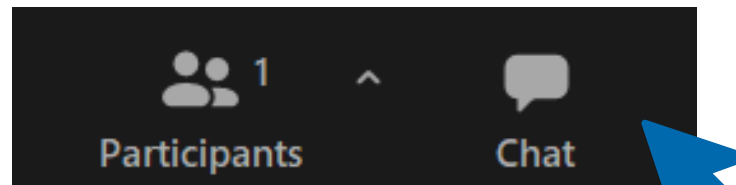
Intersection Improvement Projects Rosenberger to Posey County Line

March 11, 2021



WELCOME

- Only the Project Team has cameras and mics on
- Use the chat function in the black bar to ask a question
- Questions can be typed in the chat function at any time
- The moderator will pose questions at end of the presentation



Bottom of your screen



PRESENTERS



David Goffinet
Lochmueller Group
Stakeholder Coordinator



Jeff Whitaker
Lochmueller Group
Project Manager



AGENDA

- 1) Project Overview
- 2) Rosenberger to Posey County Line Proposed Improvements
- 3) Next Steps
- 4) Questions





PROJECT OVERVIEW

PROJECT PURPOSE

- Improve safety
- Improve mobility
- Maintain accessibility

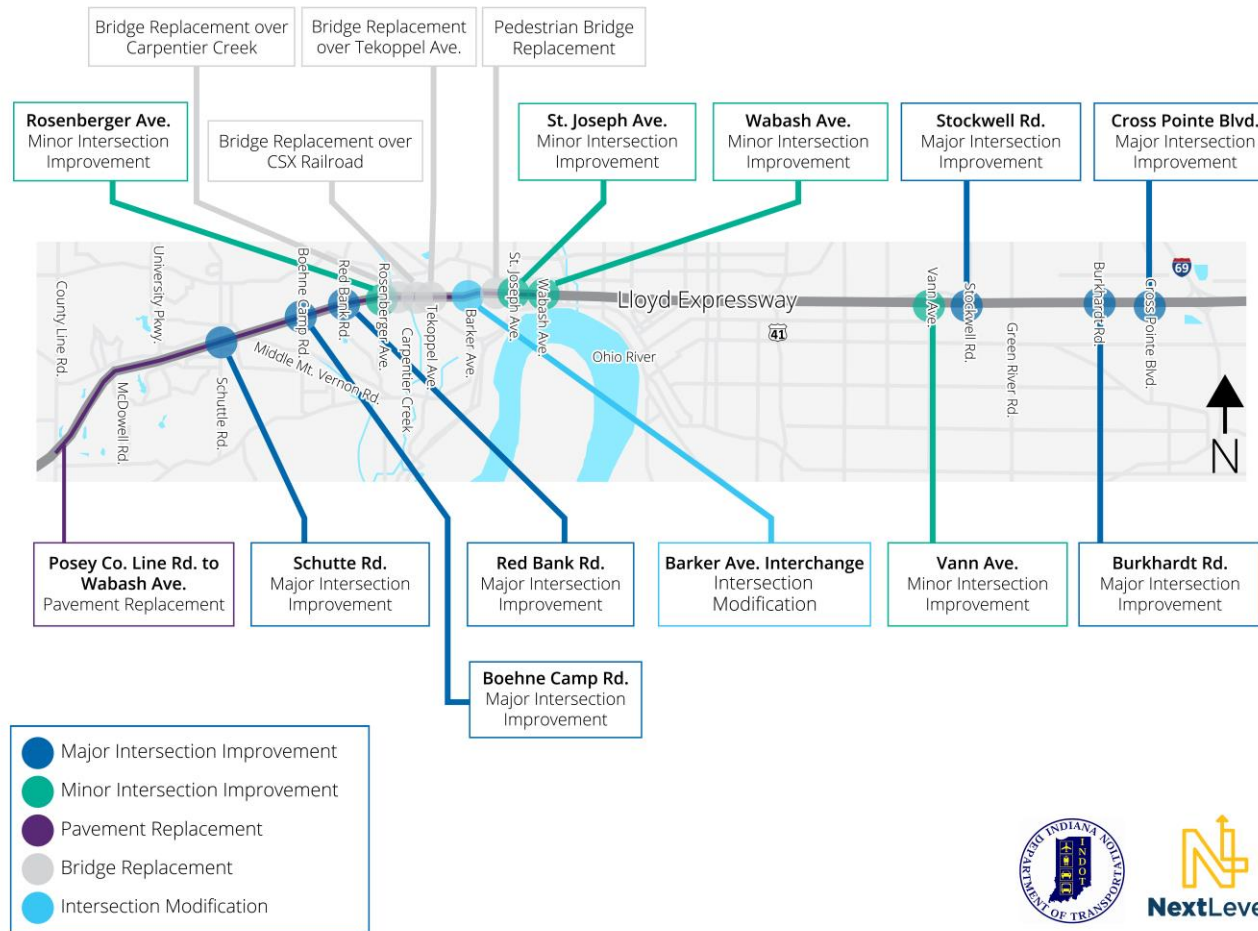


PROJECT OVERVIEW

- Includes more than a dozen improvement projects
- INDOT plans to invest more than \$100 million
- Projects extend across Vanderburgh County, from Posey County Line Road to Cross Pointe Boulevard
- Projects include intersection improvements, bridge replacements, pavement replacement and more



IMPROVEMENT LOCATIONS



- All design concepts are preliminary and subject to change





ALTERNATIVE DESIGNS

DISPLACED LEFT TURN

- Also known as a continuous flow intersection
- Vehicles turning left cross traffic and move to the other side of the road, with a signal, in advance of the intersection
- Traffic turning left moves with through traffic at the same time
- Left turn signal is removed from the intersection, allowing continuous flow for vehicles in both directions
- Reduces conflict points, improving safety

(FHWA Video example of displaced left turn)





ALTERNATIVE INTERSECTIONS

Displaced Left Turn



U.S. Department of Transportation
Federal Highway Administration



Safe Roads for a Safer Future
Investment in roadway safety saves lives

BOULEVARD LEFT TURN

- A type of left turn maneuver that eliminates left turns from the main intersection
- Vehicles are rerouted through the intersection and turn left through a one-way median (make a U-turn) back to the intersection
- All boulevard lefts planned for TheLloyd4U include a traffic signal for the left turn at the one-way median
- Reduces conflict points, improving safety



HYBRID SOLUTION

- Includes elements from both a displaced left turn and a boulevard left turn
- Elements work in tandem to improve intersection performance, safety and wait times



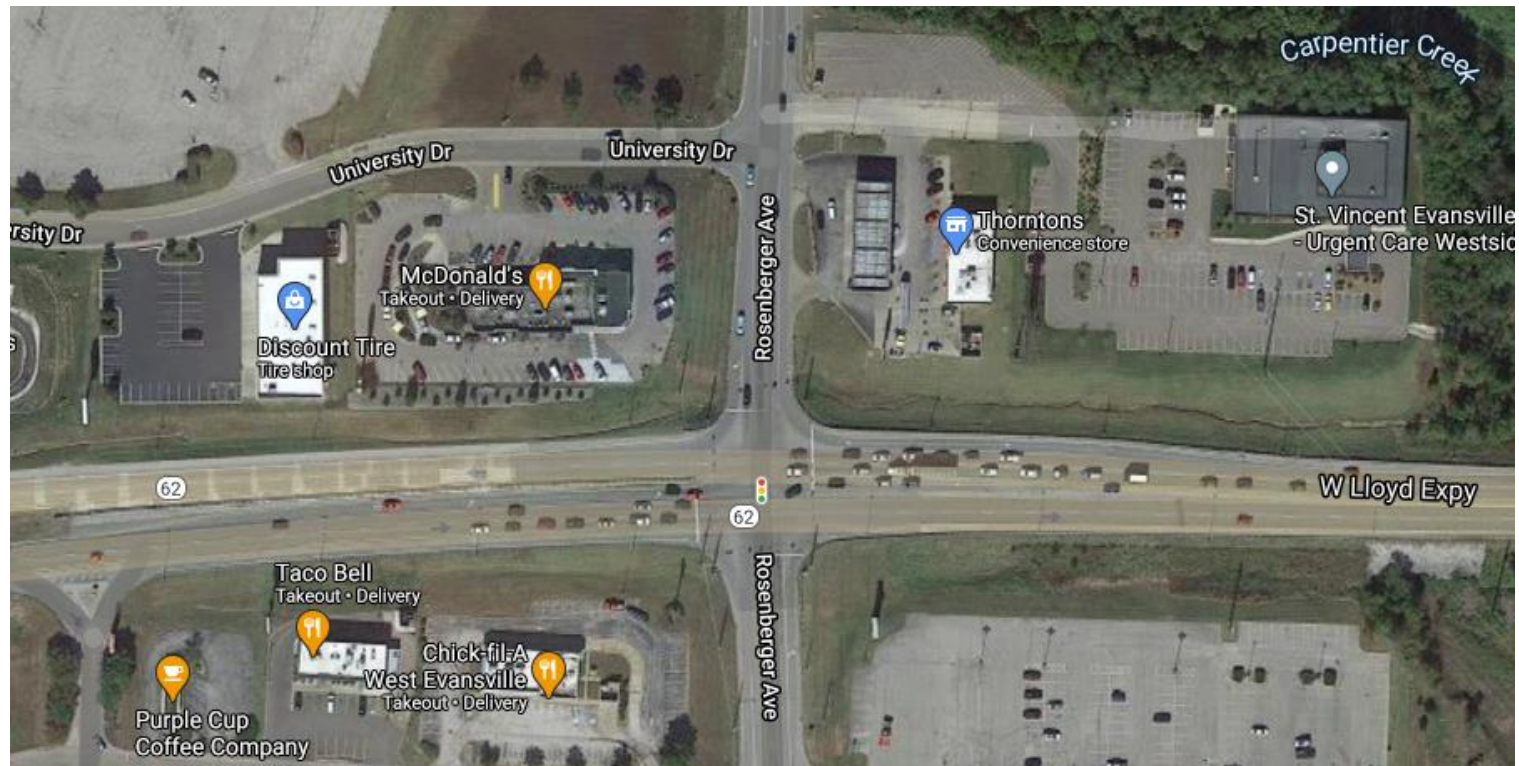


IMPROVEMENT PROJECTS

ROSENBERGER AVENUE

Current Conditions

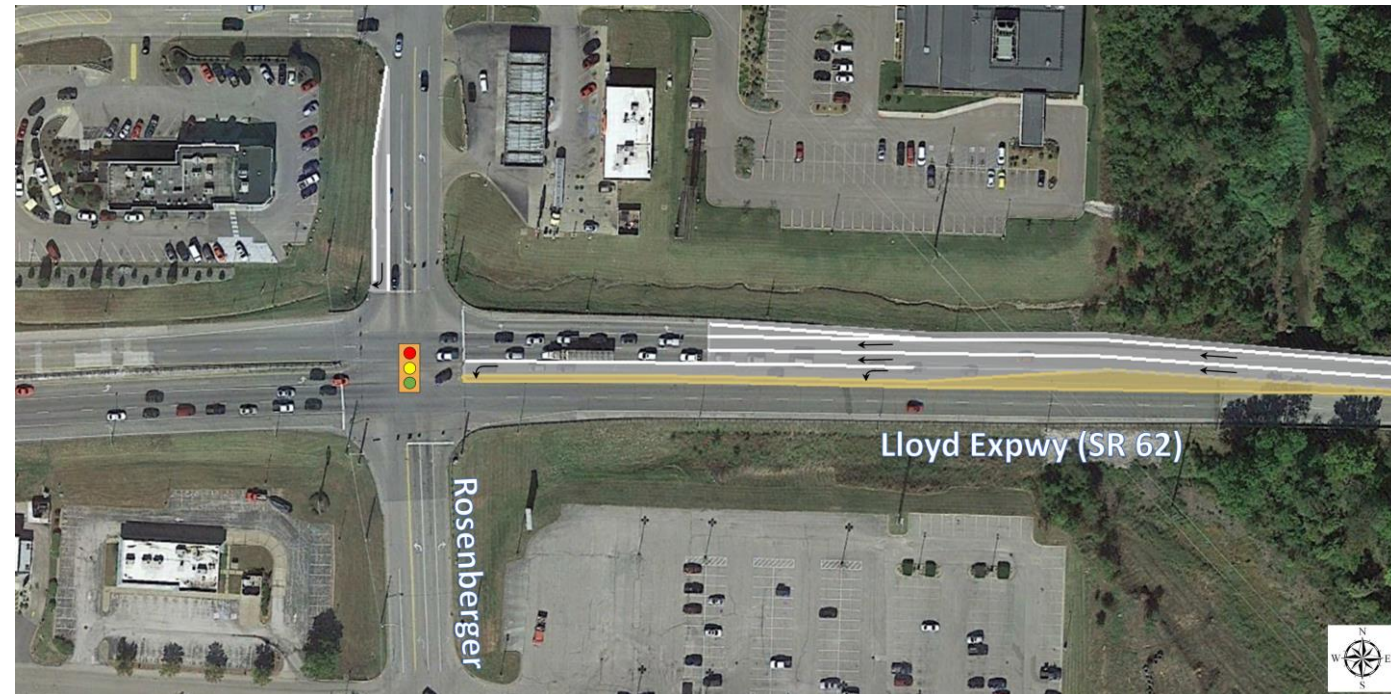
- Beginning of heavy commercial corridor
- High number of westbound rear-end accidents
- Westbound site distance challenges
- High volume traffic in all directions



ROSENBERGER: Minor Intersection Improvement

Proposed Improvements

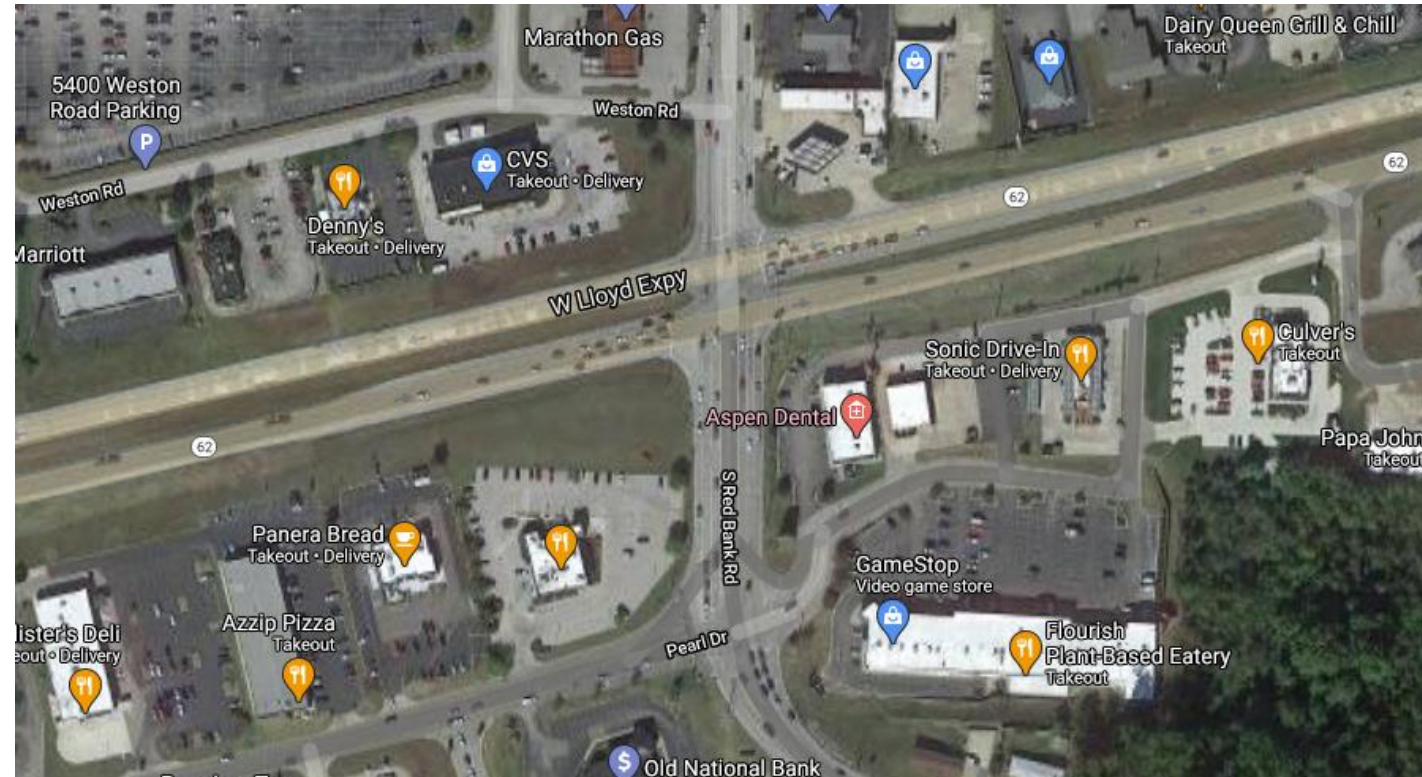
- Restrict right turns on red with signal modifications
- Extend turn lanes and reconstruct pavement
- Improve westbound sight distance



RED BANK ROAD

Current Conditions

- Heavy commercial corridor
- High volume traffic in all directions



RED BANK ROAD: Major Intersection Improvement

- Dual displaced left turns
- Northbound/southbound maintain same lane configurations
- Provisional project – fiscal year funding yet to be determined



BOEHNE CAMP ROAD

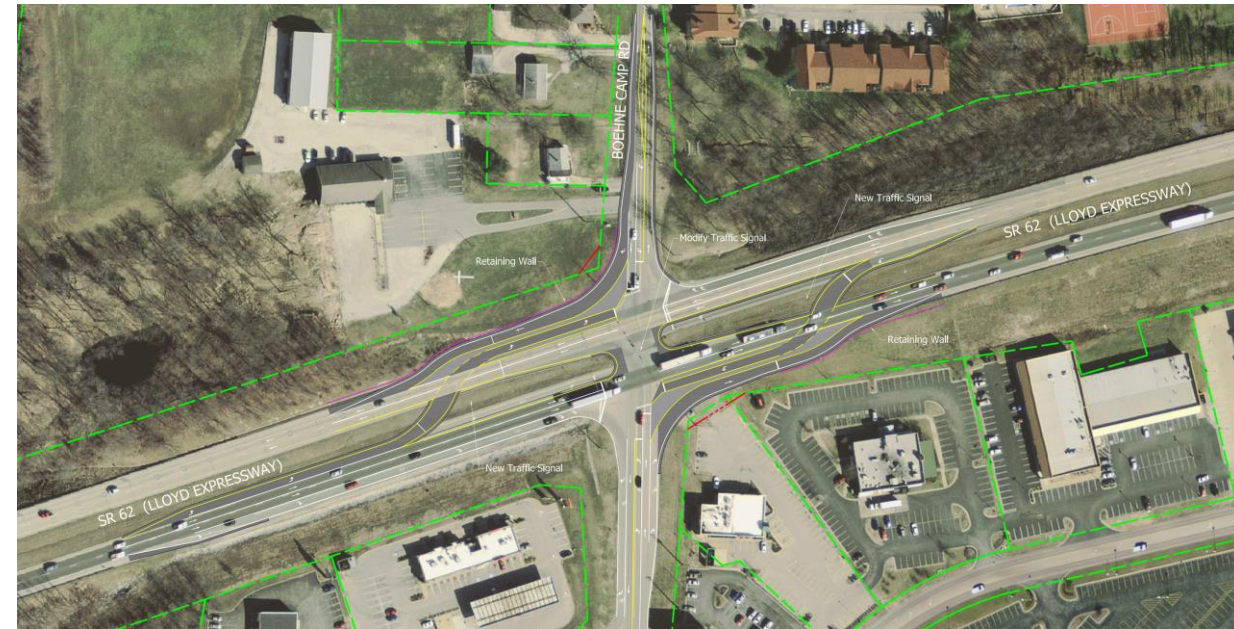
Current Conditions

- Heavy commercial corridor to south
- Heavy residential to the north



BOEHNE CAMP: Major Intersection Improvement

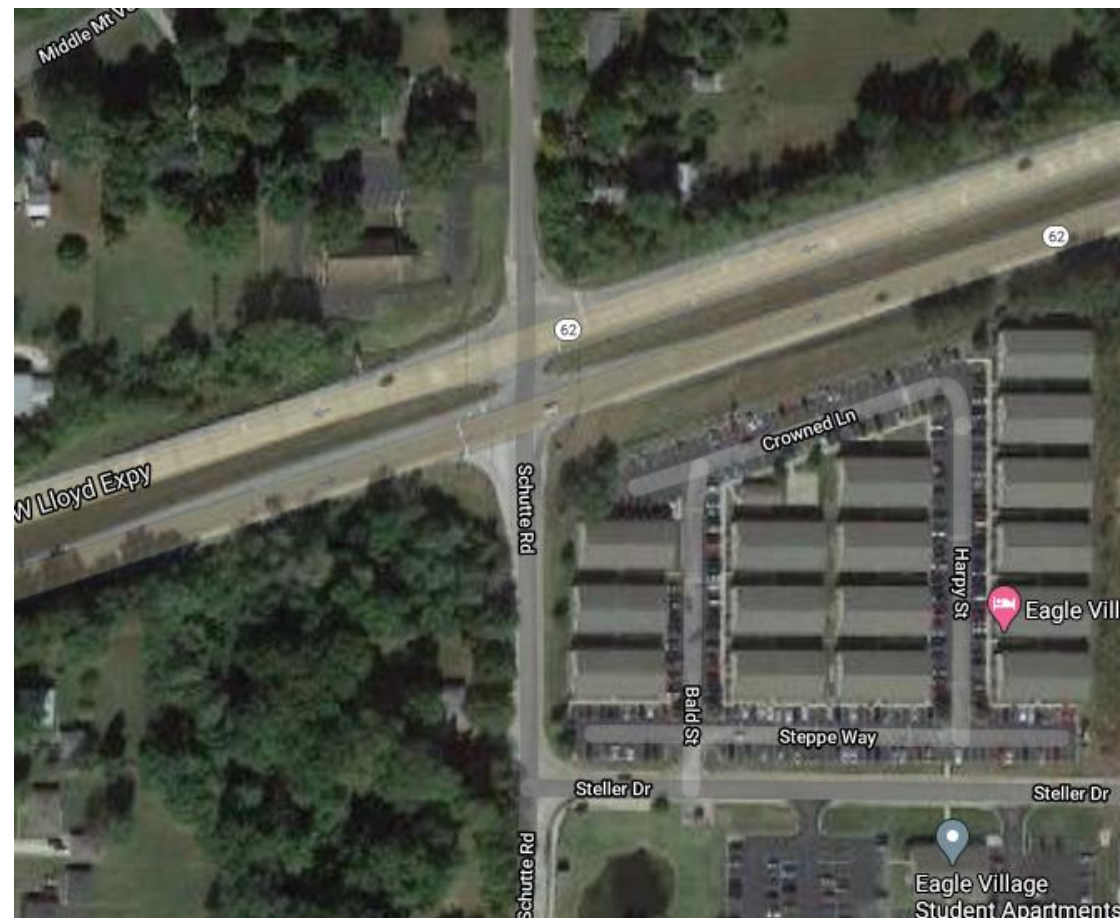
- Dual displaced left turns
- Southbound traffic will have additional left and right turn movements
- Northbound configuration will remain the same
- Provisional project with fiscal year funding yet to be determined



SCHUTTE ROAD

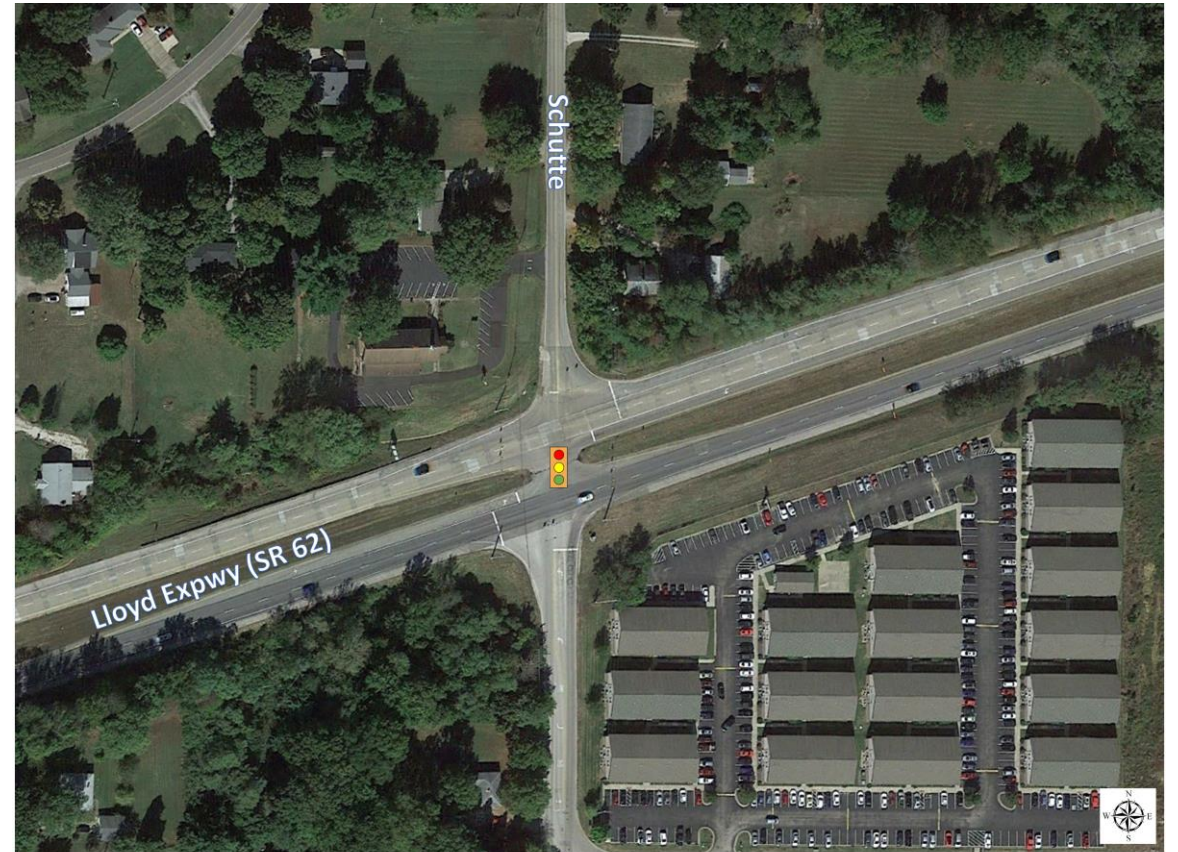
Current Conditions

- Heavy residential development to north
- Multiple apartment units to south
- Rear access to USI apartments and campus to south



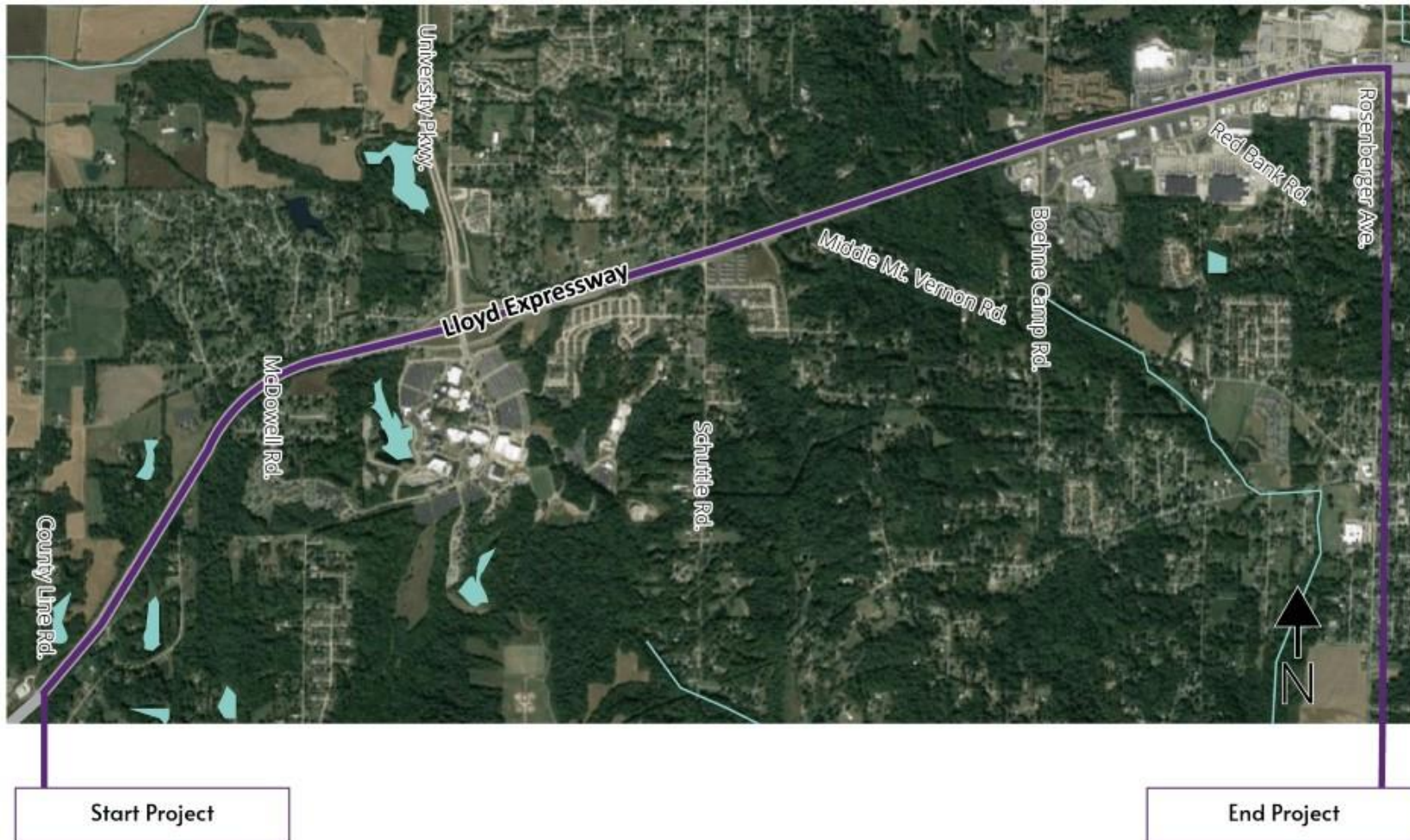
SCHUTTE ROAD: Improvements TBD

- Improvements for Schutte Road are still under development
- Impacts on Felstead and Middle Mt. Vernon roads are being considered



PAVEMENT REPLACEMENT: County Line to Rosenberger

- Beyond life expectancy





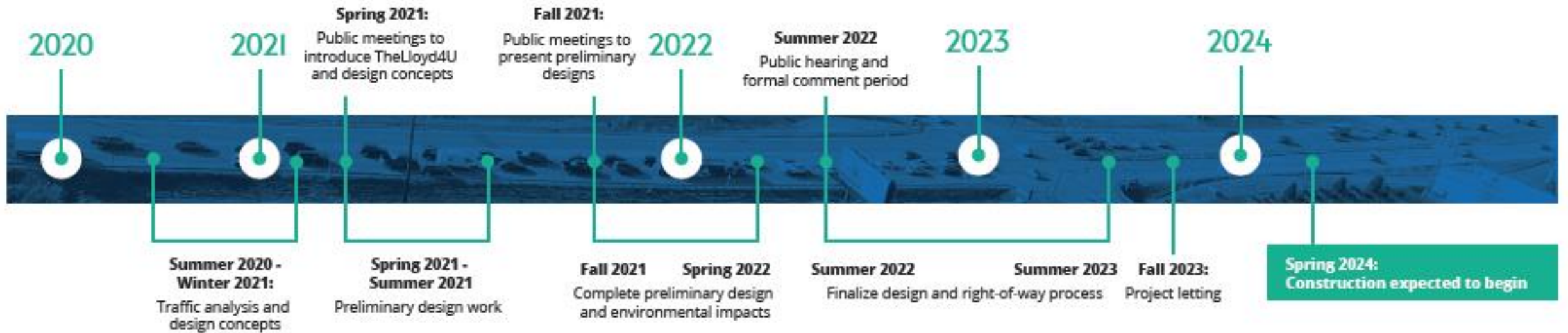
NEXT STEPS

NEXT STEPS

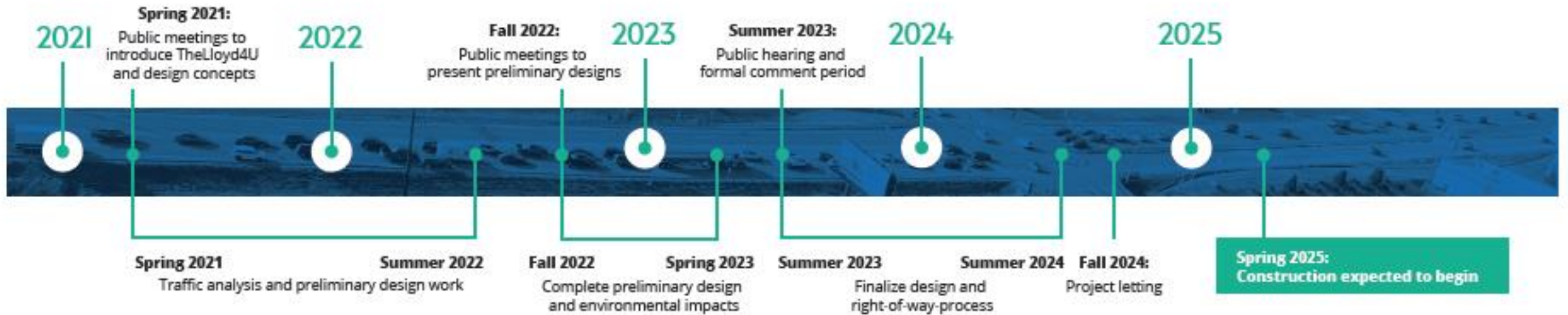
- Finalize traffic assessments
- Public Meetings
 - April 20: Virtual
 - April 21 and 22: In person (east and west side locations)
- Initiate design efforts
- Future stakeholder meetings: November 2022 and February 2024



PHASE I: ROSENBERGER TO CROSS POINTE



PHASE 2: POSEY COUNTY LINE TO ROSENBERGER





FOLLOW OUR PROGRESS

FOLLOW OUR PROGRESS



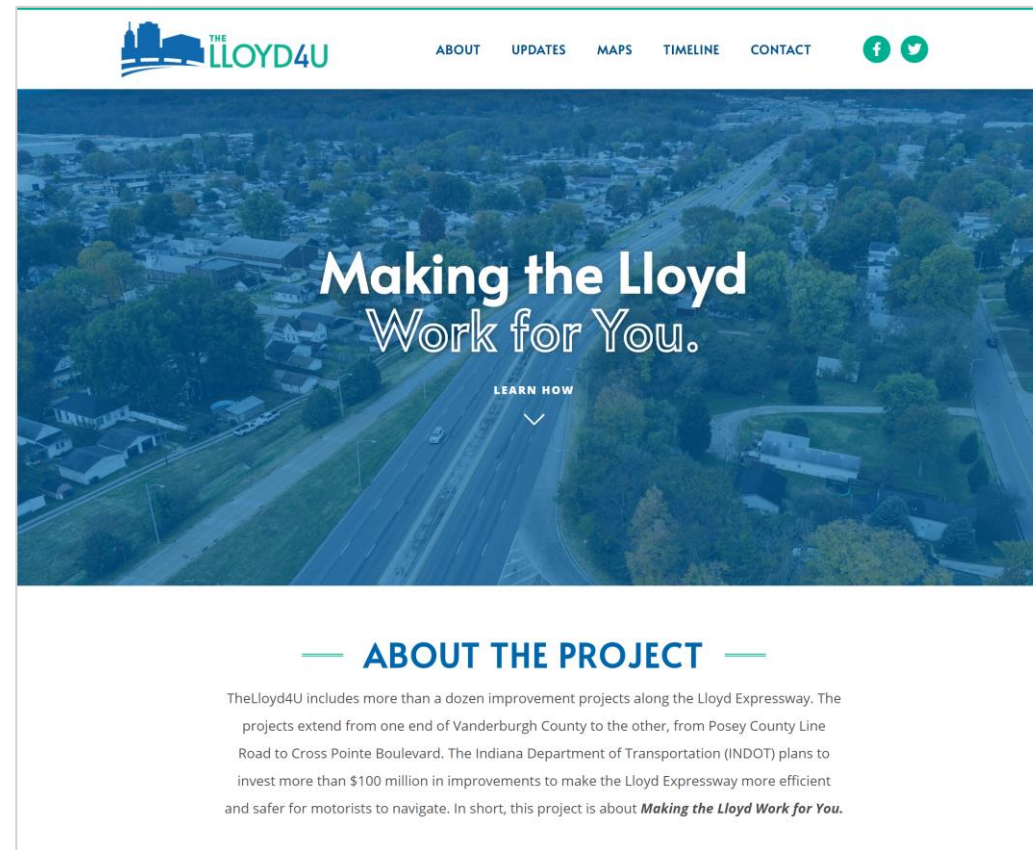
www.TheLloyd4U.com



TheLloyd4U



@TheLloyd4U



QUESTIONS AND COMMENTS



www.INDOT4U.com



855-INDOT4U (463-6848)



INDOT@indot.in.gov

IN.gov | INDOT

Home Knowledge Register Login

Contact INDOT

Report a roadway concern or request information

How can we help? (minimum 3 characters)

Report a Concern
Report an issue or concern about our roadways.

Make a Request
Request information or assistance.

Find an Answer
Search for answers to frequently asked questions.

Most Read Articles

- Where can I find the latest information about construction projects?
Knowledge Administrator - ★★★★★

Featured Articles

No content to display

Most Useful Articles

- Where can I file a claim for the damage to my vehicle caused by a pothole?
Knowledge Administrator - ★★★★★



QUESTIONS?



THANK YOU

